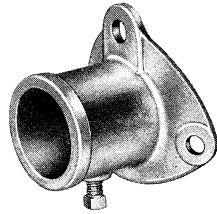
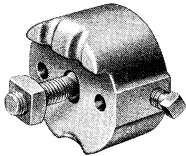


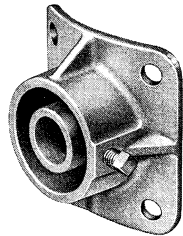
J1502



J1501



J0522



J0521

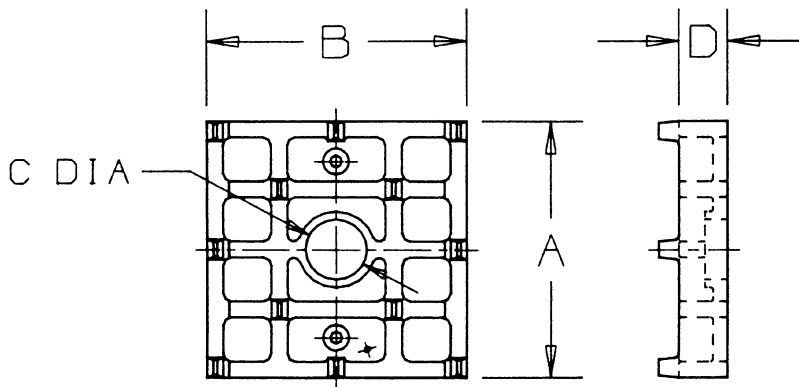
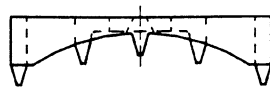
## Fittings, Sidewalk Guy

### Hot Dip Galvanized

These cast iron fittings are used with standard pipe near sidewalks and buildings where there is insufficient space for standard guying and where head clearance must be maintained. The J1501 pole plate is mounted with one 5/8-inch bolt and two 1/2-inch lag screws. The J1502 end fitting clamps the strand.

The J0521 pole plate has four 9/16-inch holes for mounting with lag screws. The J0522 end fitting requires a J931 guy clamp which must be ordered separately. The 5/8 x 2-1/4-inch track bolt replaces one of 'outer' bolts of the J931 guy clamp.

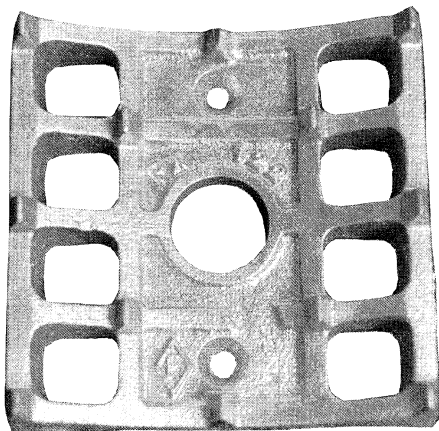
Catalog No.	Description	Pipe Size (Inches)	Approximate Shipping Weight (Lbs. Per 100 Pcs.)
J1501	Pole Plate	2	380
J1502	Clamp End Fitting	2	521
J0521	Pole Plate	2 & 2-1/2	495
J0522	Clamp Bolt End Fitting	2 & 2-1/2	350



## Gains, Curved Grid

### Hot Dip Galvanized

Cast grid gains provide increased stability and eliminate the need to gain the pole. Bolt hole slotting is also reduced by distributing the load over a large wood surface.



Catalog No.	Dimensions (Inches)				Pole Dia. Range	Approximate Weight (Lbs. Per 100 Pcs.)
	A	B	C	D		
PX122	4	4	15/16	3/4	6-12	127
PX124-5A	4	5-5/16	13/16	1	6-11	228
PX124-5B	4	5-5/16	15/16	1	6-11	228
PX125A	5-1/4	7	11/16	1	10-16	257
PX125B	5-1/4	7	15/16	1	10-16	250
PX261	6-3/4	4	15/16	9/16	9-15	127