



## **PREFORMED** LINE PRODUCTS

### **Section 22 – Splices**

#### Table of Contents

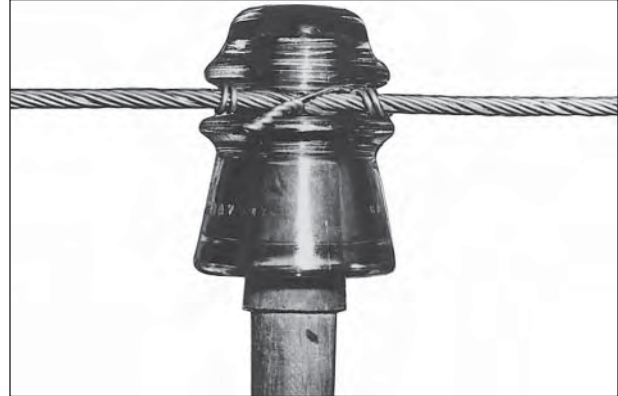
<b>Open Wire Splice .....</b>	<b>22-2</b>
<b>Strand Splice.....</b>	<b>22-3</b>
<b>Reducing Splice.....</b>	<b>22-4</b>



# Open Wire Splice

## Open Wire Splice

PREFORMED™ Open Wire Splices are used for mid-span splicing during new construction and for repair of abraded or severed wire at tie points. Provides armoring at the tie that is designed to protect the conductor from damaging effects of chafing and fretting. Open Wire Splices wrap on easily by hand without a need for wire cutting. They are designed to permanently restore the full mechanical strength and conductivity of the conductor to which they are applied.

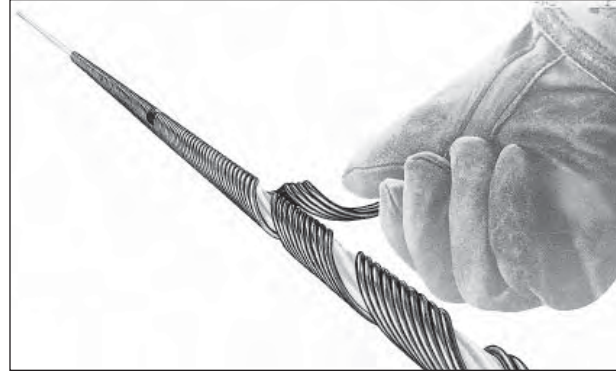


Catalog Number	Wire		Number of Subsets	Length	Color Code	Per Carton	
	Gauge	Size				Units	Wt./Lbs.
<b>Galvanized Steel</b>							
GLS-3101	BWG-12	.109"	3	12"	Black	100	9
GLS-3103	BWG-10	.134"	3	14"	Orange	100	15
<b>Aluminum Clad Steel</b>							
AWLS-5101	AWG-11	.091"-.095"	2	12"	Green	100	7

# Strand Splice

## Strand Splice

PREFORMED™ Strand Splices are used to repair strand or messenger simply and economically. All applications can be checked visually —no guesswork involved. Because of its superior design, the Strand Splice provides maximum strength and excellent fatigue characteristics resulting in longer life for both strand and messenger.



Galvanized Steel, C-coat								
Catalog Number	Size	Strand Construction	Mean Diameter	Length	No. of Subsets	Color Code	Units Per Carton	Wt./Lbs. Per Carton
Utility Grade C-Coat								
GLS-2115	3/16"	7W	.195"	22"	3	Red	100	20
GLS-2117	5/16"	7W	.327"	29"	3	Black	50	26
GLS-2118	3/8"	7W	.360"	34"	3	Orange	50	42
GLS-2119	7/16"	7W	.435"	41"	3	Green	25	37
Extra High Strength C-Coat								
GLS-2102	3/16"	7W	.186"	27"	2	Red	100	30
GLS-2104	1/4"	7W	.240"	35"	2	Yellow	50	34
GLS-2106	5/16"	7W	.312"	42"	3	Black	50	46
GLS-2107	3/8"	7W	.360"	50"	3	Orange	25	38
GLS-2108	7/16"	7W	.435"	56"	3	Green	25	57
GLS-2109	1/2"	7W	.495"	63"	3	Blue	10	34

**NOTE:** Left hand lay standard

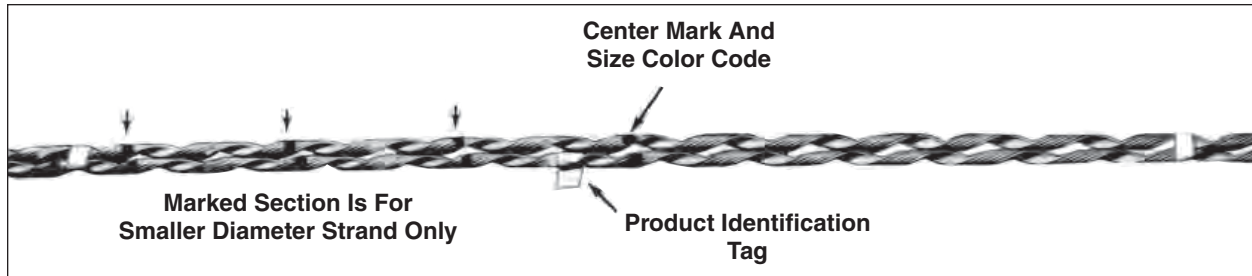
Bezinal® Strand*								
Catalog Number	Size	Strand Construction	Mean Diameter	Length	No. of Subsets	Color Code	Units Per Carton	Wt./Lbs. Per Carton
BLS-9102	3/16"	7W	.186"	27"	2	Red	100	30
BLS-9104	1/4"	7W	.240"	35"	2	Yellow	50	34
BLS-9106	5/16"	7W	.312"	42"	3	Black	50	46
BLS-9107	3/8"	7W	.360"	50"	3	Orange	25	38
BLS-9108	7/16"	7W	.435"	56"	3	Green	25	57
BLS-9109	1/2"	7W	.495"	63"	3	Blue	10	34

**NOTE:** Left hand lay standard

\*Manufactured from Bezinal Material. Bezinal is a registered trademark of the Bekaert Corporation.



# Reducing Splice



## Reducing Splice

PREFORMED™ Reducing Splices are intended to permanently join two strands of different diameters. Application by hand—no tools required—is fast, easy, uniform and can be visually checked to assure proper application. Without any loose parts, jaws to seat, or teeth to bite into the strand, the Reducing Splice is designed to permit spinner-free travel without adjusting the gates or lifting the spinner over the splice.

The PREFORMED Reducing Splice is made of material completely compatible with the strand to which it is applied and can be used in any environment.

Galvanized Steel, C-Coat for use on Extra High Strength or Utility Grade Strands							
Catalog Number	Standard Size		Length	Reduced End Color Code	Per Carton		Non-Reduced End Color Code
	From	To			Units	Wt./Lbs.	
LSR-2122	5/16"	1/4"	35"	Yellow	50	33	Black
LSR-2123	3/8"	5/16"	42"	Black	25	25	Orange
LSR-2124	7/16"	3/8"	50"	Orange	25	39	Green
LSR-2125	3/8"	1/4"	42"	Yellow	50	41	Orange

**NOTE:** Left Hand Lay Standard