

**DROPLINE HARDWARE**

Drop Wire Clamp	1
Fibre Drop Wire Clamp	1
Messenger Drop Clamp	1
Drop Pole Clamp	2
Span Clamp	2
Drop Wire Clip	3
Drop Wire Hook	3
E Drop Wire Clamp	3
Dual Cable Clamp	3
Corner Wall Bracket	3
Service Mast Strap	3
House Hook	4
U Cable Clip	4
Cable Clip	4
Baseboard Clip	5
S Clip	5
Cable Clamp	5
Cable Strap	6
C Wire Loop	6
Drive Pin	6
Drive Ring	7
3/4" Ground Bracket	7
Aluminum Cable Tie	7
ID Tag	7
Plastic Cable Clamp	8
Plastic Anchor	8
Plastic Anchor Kit	8
Angle Screw	8
Two Post Terminal	8

**BONDING & GROUNDING PRODUCTS**

Ground Rod Clamp	9
Grounding Connector	9
Ground Block	10
Bonding Ribbon Connector	10
Distribution Connector	11
Structure Ground Clamp	11
Universal Ground Strap Clamp	12
B Ground Wire Clamp	12
Bronze Pipe Ground Clamp	12
Split Bolt	13
Meter Box Clamp	13
KUL Bonding Clamp	14
Tap Clamp	14
Bonding Ribbon Clamp	14
B Strand Ground Clamp	14
Coupling	14
Copper Bond Bar	14
Bonding Ribbon	15
Bond Braid	15

Ground Wire	15
ID Ground Tag	15
Multiple Ground Bar	16
Tap Grounding Clamp	16
Demarcation Plate	16

**AERIAL/POLELINE HARDWARE**

Drive Hook	17
Cable Suspension Clamp	17
Guy Hook	17
Thimble Eye Nut	18
Lashing Support Strap and Spacer	18
Lashing Wire	19
D Cable Lashing Wire Clamp	19
Lashing Wire Clamp	19
Pole Step	19
Cable Guard Strap	20
Aluminum Damper	20
Tap Bracket	21
Reinforcing Strap	21
Guy Attachment	21
Drive Screw	22
Lag Screw	22
Crossover Clamp	22
Double Arming Bolt	23
Carriage Bolt	23
Machine Bolt	24
Square Nut	26
Lock Washer	26
Nail	26
Washer	27
Staple	27

**DATACOM PRODUCTS**

Distribution Ring	29
Wall Plate	29
Bridle Ring	30
Baseboard Clip	30
Drive Ring	30

**TOOLS**

Auger Bit	31
Bellhanger's Drill Bit	31
Terminal Wrench	32
Handi-Reel	32
Throwing Weight	32

**APPLICATIONS**

# CROSS REFERENCE BY SENIOR INDUSTRIES PART NUMBER

Part Number	Page	Part Number	Page	Part Number	Page	Part Number	Page	Part Number	Page	Part Number	Page
SI-100	27	SI-0060	30	SI-0968	1	SI-1430	25	SI-3113	26	SI-7511-16	18
SI-101	27	SI-0061	30	SI-0969	1	SI-1432	25	SI-3720	14	SI-7511-22	18
SI-102	27	SI-0062	30	SI-0969INS	1	SI-1434	25	SI-3910	14	SI-7511-28	18
SI-103	27	SI-0063	30	SI-0969INS-1	1	SI-1436	25	SI-4405	18	SI-7511-34	18
SI-104	27	SI-0064	3	SI-0972	1	SI-1438	25	SI-4406	18	SI-7511-45	18
SI-110	27	SI-0064R	3	SI-0975	2	SI-1500	32	SI-4425	17	SI-7511-50	18
SI-121	27	SI-0075	20	SI-0984	3	SI-1508	25	SI-4426	17	SI-7511-66	18
SI-122	27	SI-0076	20	SI-0985	3	SI-1510	25	SI-4430	21	SI-7511-78	18
SI-123	27	SI-0077	20	SI-0986	3	SI-1512	25	SI-4609	6	SI-7512-025	18
SI-141	28	SI-0078	20	SI-0987	3	SI-1514	25	SI-4610	6	SI-7512-050	18
SI-142	28	SI-0079	20	SI-0987D	3	SI-1516	25	SI-4611	6	SI-7512-075	18
SI-143	28	SI-0081	9	SI-0988-6	4	SI-1518	25	SI-4612	6	SI-7512-100	18
SI-150	28	SI-0082	9	SI-0988-6G	4	SI-1520	25	SI-4753	29	SI-7512-125	18
SI-151	28	SI-0088A	21	SI-0988-6Q	4	SI-1522	25	SI-4753M	29	SI-7512-150	18
SI-152	28	SI-00E6	8	SI-0988-11	4	SI-1524	25	SI-4754	29	SI-7512-175	18
SI-153	28	SI-00E8	8	SI-0988-12G	4	SI-1526	25	SI-4754M	29	SI-7512-200	18
SI-170	26	SI-0513	2	SI-0988-59	4	SI-1550	32	SI-4755	29	SI-7512-225	18
SI-171	28	SI-0513MB	2	SI-0988-C5	4	SI-1630	14	SI-4755M	29	SI-7512-250	18
SI-172	28	SI-0514	2	SI-0989-6	4	SI-1638	15	SI-5362	26	SI-7512-275	18
SI-173	28	SI-0515	2	SI-0989-6Q	4	SI-1720	14	SI-5363	26	SI-7512-300	18
SI-180	28	SI-0515GC	2	SI-0989-11	4	SI-1740	17	SI-5364	26	SI-7512-325	18
SI-181	28	SI-0515MB	2	SI-0989-59	4	SI-1750	17	SI-5365	26	SI-9000	27
SI-182	28	SI-0556	23	SI-0989D-6	4	SI-1755	17	SI-5366	26	SI-9004	27
SI-200	28	SI-0557	23	SI-0989D-6Q	4	SI-1756	22	SI-5947	12	SI-9010	27
SI-201	28	SI-0558	23	SI-0989D-11	4	SI-2002	13	SI-5948	12	SI-9023	27
SI-202	28	SI-0560	23	SI-0989D-59	4	SI-2004	13	SI-5948G	12	SI-9024	27
SI-203	28	SI-0565	23	SI-0989N-6	4	SI-2006	13	SI-6035	22	SI-9061	27
SI-204	28	SI-0566	23	SI-0989N-6Q	4	SI-2008	13	SI-6037	22	SI-9063	27
SI-205	28	SI-0567	23	SI-0989N-11	4	SI-2010	16	SI-6101	6	SI-9065	27
SI-206	28	SI-0568	23	SI-0989N-59	4	SI-2020	16	SI-6102	6	SI-9102	27
SI-210	28	SI-0570	23	SI-0990	5	SI-2030	16	SI-6103	6	SI-9103	27
SI-211	28	SI-0572	23	SI-0990-2	5	SI-2030-81	16	SI-6104	6	SI-9104	27
SI-212	28	SI-0574	23	SI-0990-3	5	SI-2040	16	SI-6105	6	SI-9106	27
SI-213	28	SI-0623	23	SI-0991	5, 30	SI-2040-81	16	SI-6106	6	SI-9130	32
SI-214	28	SI-0624	23	SI-0992	5, 30	SI-2140	11	SI-6107	6	SI-9541	15
SI-215	28	SI-0625	23	SI-0993	5, 30	SI-2141	11	SI-6108	6	SI-9542	15
SI-216	28	SI-0626	23	SI-0994	5, 30	SI-2142	9	SI-6203	22	SI-9603	19
SI-900	26	SI-0627	23	SI-1012	23	SI-2143	11	SI-6204	22	SI-9607	19
SI-901	26	SI-0628	23	SI-1014	23	SI-2145	11	SI-6228	22	SI-9609	19
SI-903	26	SI-0910	23	SI-1016	23	SI-2145A	11	SI-6229	22	SI-AB-250	31
SI-911	26	SI-0912	23	SI-1018	23	SI-2154	13	SI-6237	22	SI-AB-312	31
SI-912	26	SI-0914	23	SI-1020	23	SI-2159	10	SI-6238	22	SI-AB-375	31
SI-913	26	SI-0916	23	SI-1022	23	SI-2160	11	SI-6344-9	6	SI-AB-437	31
SI-921	26	SI-0918	23	SI-1024	23	SI-2160S	11	SI-6344-11	6	SI-AB-500	31
SI-0010	4	SI-0920	23	SI-1026	23	SI-2161	10	SI-6344-13	6	SI-AB-562	31
SI-0010CW	4	SI-0922	23	SI-1028	23	SI-2162	10	SI-6344-16	6	SI-AB-625	31
SI-0010L	4	SI-0924	23	SI-1030	23	SI-2163	13	SI-6344-20	6	SI-AB-687	31
SI-0012	4	SI-0926	23	SI-1130	3	SI-2165	13	SI-6344-24	6	SI-AB-750	31
SI-0012-1	4	SI-0928	23	SI-1203	24	SI-2166LG	13	SI-6344-30	6	SI-AB-812	31
SI-0012-2	4	SI-0930	23	SI-1204	24	SI-2166LS	13	SI-6344-36	6	SI-AB-875	31
SI-0012-ANG	4	SI-0932	23	SI-1206	24	SI-2166SG	13	SI-6344-42	6	SI-AB-937	31
SI-0012-COR	4	SI-0936	8	SI-1208	24	SI-2166SS	13	SI-6344-56	6	SI-AB-1000	31
SI-0013	7	SI-0937	8	SI-1209	24	SI-2167	13	SI-6344-64	6	SI-AB-1062	31
SI-0014	4	SI-0938	8	SI-1210	24	SI-2167C	13	SI-6651	30	SI-BD-187	31
SI-0015	3	SI-0939-7	7	SI-1211	24	SI-2167GC	13	SI-6653	30	SI-BD-250	31
SI-0015-1	3	SI-0939-10	7	SI-1212	24	SI-2167SLM-NL	13	SI-6666	30	SI-BD-312	31
SI-0015SS	3	SI-0939-12	7	SI-1214	24	SI-2168C	13	SI-6667	30	SI-BD-375	31
SI-0024	2	SI-0952	2	SI-1216	24	SI-2169	9	SI-6669	30	SI-BD-437	31
SI-0029	22	SI-0954-6	12	SI-1304	24	SI-2169M	9	SI-6861	7	SI-BD-500	31
SI-0030	22	SI-0954-9	12	SI-1305	24	SI-2169SS	9	SI-6862	7	SI-BD-562	31
SI-0031	22	SI-0954-12	12	SI-1306	24	SI-2170	9	SI-6863	7	SI-BD-625	31
SI-0032	22	SI-0954G-6	12	SI-1308	24	SI-2172	10	SI-6864	7	SI-BD-687	31
SI-0033	22	SI-0954G-9	12	SI-1315	24	SI-2173	11	SI-6933-1	5	SI-BD-750	31
SI-0034	22	SI-0954G-12	12	SI-1316	24	SI-2174	14	SI-6933-3	5	SI-GB-10	10
SI-0036	22	SI-0956	1	SI-1317	24	SI-2174TC	14	SI-6933-4	5	SI-GB-20	10
SI-0038	9	SI-0956P	1	SI-1318	24	SI-2175	19	SI-6933-6	5	SI-GB-22	10
SI-0038C	9	SI-0957	1	SI-1319	24	SI-2176	19	SI-6933-8	5	SI-GB-50	10
SI-0038CN	9	SI-0958-6	12	SI-1320	24	SI-2290	14	SI-6933-10	5	SI-GB-60	10
SI-0038N	9	SI-0958-9	12	SI-1322	24	SI-2302	20	SI-6933-13	5	SI-GB-65	10
SI-0039	22	SI-0958-12	12	SI-1324	24	SI-3000	17	SI-6933-17	5	SI-SK-10	8
SI-0040	19	SI-0958-6G	12	SI-1326	24	SI-3001	17	SI-6933-21	5	SI-SK-8	8
SI-0041	20	SI-0958-9G	12	SI-1410	25	SI-3100	26	SI-6933-25	5	SI-TAG-100-G	15
SI-0042	20	SI-0958-12G	12	SI-1412	25	SI-3101	26	SI-6933-30	5	SI-TAG-101	7
SI-0043	24	SI-0959	1	SI-1414	25	SI-3102	26	SI-6933-35	5	SI-TAG-102	7
SI-0044	24	SI-0959P	1	SI-1416	25	SI-3103	26	SI-7005	8	SI-TAP-250	21
SI-0045	24	SI-0960	12	SI-1418	25	SI-3104	26	SI-7006	8	SI-TAP-250G	21
SI-0046	24	SI-0961	1	SI-1420	25	SI-3105	26	SI-7171	15	SI-TAP-250GC	21
SI-0047	19	SI-0964	3	SI-1422	25	SI-3106	26	SI-7177-1	15	SI-TAP-900	21
SI-0048	20	SI-0964R	3	SI-1424	25	SI-3107	26	SI-7195	32	SI-TAP-900G	21
SI-0058	22	SI-0965	1	SI-1426	25	SI-3108	26	SI-7501	8	SI-WP-100	29
SI-0059	22	SI-0966	1	SI-1428	25	SI-3109	26	SI-7511-10	18		



**Certification**

Awarded To

**SENIOR INDUSTRIES**

610 POND DRIVE  
WOOD DALE, ILLINOIS USA

BVQi (NA), Inc. certifies that the management system of the above organization has been audited and found to be in accordance with the requirements of the management system standards and scope of supply detailed below

STANDARDS

ISO 9001:2000

SCOPE OF SUPPLY

**DESIGNER, MANUFACTURER AND SUPPLIER OF STANDARD AND CUSTOM ELECTROMECHANICAL COMPONENTS TO THE TELECOMMUNICATIONS AND OTHER INDUSTRIES WITH EMPHASIS ON SWITCHES, JACKS, CONNECTORS, MAGNETIC PRODUCTS (TRANSFORMERS, CHOKES, COILS), PLUGS, CABLE ASSEMBLIES; AND OUTSIDE PLANT HARDWARE PRODUCTS TO THE TELEPHONE, CATV AND UTILITY INDUSTRIES**

Original Approval Date: 15 SEPTEMBER 2005

Subject to the continued satisfactory operation of the Organization's Management System, this certificate will remain valid until: 15 SEPTEMBER 2008

Further clarifications regarding the scope of this certificate and the applicability of the management system requirements may be obtained by consulting the organization.

Certificate No: 180537

Issue Date: 22 NOVEMBER 2005

A handwritten signature in blue ink, appearing to read 'Neil Conroy', written over a horizontal line.

For BVQi (NA), Inc.  
515 West 5<sup>th</sup> Street, Jamestown, New York, USA  
www.bvqina.com



**Senior Industries Drop Line Hardware is engineered and manufactured to meet today's telephone and cable systems needs of offering more bandwidth intensive, two-way applications.** Senior's Digital Drop System (DDS) Hardware is an integrated sequence of products from the tap to the subscriber's home, that is backed with installation training and support to assure the most cost effective and trouble free drop installation.

For technical support, installation information and special requirements please contact our Inside Sales Team at: 1-800-350-1650, or via e-mail at: sales@seniorindustries.com

## DROP WIRE CLAMP

- Used to strain relieve telephone drop wire
- Designed to be used to support 1 through 6 pair drop wires
- Removable
- Stainless steel or aluminum construction, metal or plastic shim
- 3 piece or 2 piece (captive shim) construction



Patented captive shim design prevents incorrect installation



Part Number	Material	Shim	Shim Material	Number of Pairs/Clamp	Carton Qty	Carton Size	Carton Weight
SI-0956	Stainless Steel	Removable	Stainless Steel	2	250	18¾" x 8½" x 4½"	23 Lbs.
SI-0956P	Stainless Steel	Removable	Plastic	2	250	18¾" x 8½" x 4½"	23 Lbs.
SI-0957	Stainless Steel	Removable	Plastic	1	250	18¾" x 8½" x 4½"	23 Lbs.
SI-0959	Aluminum	Removable	Aluminum	2	250	18¾" x 8½" x 8½"	17 Lbs.
SI-0959P	Aluminum	Removable	Plastic	2	250	18¾" x 8½" x 8½"	22 Lbs.
SI-0961	Stainless Steel	Captive	Stainless Steel	2	250	19" x 9" x 5"	24 Lbs.
SI-0965	Stainless Steel	Captive	Stainless Steel	3	200	19" x 9" x 5"	22 Lbs.
SI-0966	Stainless Steel	Removable	Stainless Steel	6	200	19" x 9" x 5"	34 Lbs.
SI-0968	Stainless Steel	Captive	Stainless Steel	6	200	19" x 9" x 5"	34 Lbs.

## FIBER DROP WIRE CLAMP

- Used to strain relieve fiber drop wire
- Removable
- Stainless steel construction
- Patent pending

Part Number	Carton Qty	Carton Size	Carton Weight
SI-0972	50	13¾" x 5" x 5½"	22 Lbs.



## MESSENGER DROP CLAMP

- Used to support messenger drop cable between the pole, mid-span and house
- Accepts RG 6, RG 6Q, RG 11 and RG 59, with .061" or .072" diameter messenger wire
- Stainless steel wire, aluminum body
- 700lb. pull capacity
- Patented

Part Number	Carton Qty	Carton Size	Carton Weight
SI-0969	100	9" x 7" x 7"	5 Lbs.
SI-0969INS	100	9½" x 9½" x 7½"	7 Lbs.
SI-0969INS-1	2000	14" x 14" x 10"	28 Lbs.



SI-0969



SI-0969INS

SI-0969INS-1

## DROP POLE CLAMP

- Used to suspend messengered drop cable at service pole while keeping the messenger strand wire intact for bonding purposes
- Retainer ring provides 1" diameter wrap to secure the messenger wire
- Galvanized steel construction



Part Number	Carton Qty	Carton Size	Carton Weight
SI-0975	100	14" x 5" x 6"	20 Lbs.

## SPAN CLAMP

- Used for mid-span drop wire take-offs
- Will hold cable away from obstacles in the line of aerial construction

### E Span Clamp

Bellcore Specification: 8391  
PID Number: 400 324 489

- Designed for 1/4" to 3/8" messenger strand
- Constructed of galvanized steel



Part Number	Carton Qty	Carton Size	Carton Weight
SI-0024	50	9" x 6" x 5"	22 Lbs.

### Q Span Clamp

- Designed for 1/4" to 3/8" messenger strand
- Constructed of galvanized steel



Part Number	Carton Qty	Carton Size	Carton Weight
SI-0513	120	14" x 5" x 6"	22 Lbs.
SI-0513MB	120	14" x 5" x 6"	29 Lbs.

### O Span Clamp

- Designed for 1/4" to 3/8" messenger strand
- Bolt/hook is made of galvanized steel
- Plates are constructed of 1/4" aluminum



Part Number	Carton Qty	Carton Size	Carton Weight
SI-0514	100	9" x 6" x 5"	22 Lbs.

### Multi-Span Clamp

- Provides fast, easy mid-span take-offs for service drops
- Designed for single messenger cable
- Galvanized steel components for maximum corrosion protection



Part Number	Carton Qty	Carton Size	Carton Weight
SI-0515	120	14" x 5" x 6"	17 Lbs.
SI-0515MB	100	14" x 5" x 6"	18 Lbs.
SI-0515GC	100	14" x 5" x 6"	18 Lbs.

### C Span Clamp

- Designed for 1/4" to 3/8" messenger strand
- Bolt/hook is made of galvanized steel
- Plates are constructed of 1/4" aluminum



Part Number	Carton Qty	Carton Size	Carton Weight
SI-0952	100	10" x 9" x 7"	24 Lbs.

## DROP WIRE CLIP

Bellcore Specification: 7226

Part Number      PID Number  
SI-0986            400 122 560

- Used to loop and hold a drop wire to itself for snub attachments
- Constructed of aluminum
- Ordinary pliers are used to fasten the clip to the drop wire

Part Number	Clip Size	Carton Qty	Carton Size	Carton Weight
SI-0984	6 pr.	1000	18" x 14" x 14"	17 Lbs.
SI-0985	2-3 pr.	1000	12" x 6" x 6"	7.5 Lbs.
SI-0986	1-2 pr.	1000	18" x 16" x 14"	4 Lbs.



## DROP WIRE HOOK

Bellcore Specification: 6530

PID Number: 400 315 156

- Specially shaped hook for attaching drop wire clamps or drop wires to houses
- Constructed of high quality steel
- Galvanized for maximum corrosion resistance

Part Number	Carton Qty	Carton Size	Carton Weight
SI-1130	100	6½" x 5" x 4½"	7 Lbs.



## E DROP WIRE CLAMP

Bellcore Specification: 7590

PID Number: 400 121 547

- Drop wire clamp is used to secure drop wire to wood or masonry surfaces
- Constructed of galvanized steel

Part Number	Clip Size	Bag Qty	Carton Qty	Carton Size	Carton Weight
SI-0987	2 Pr.	200	3000	14" x 14" x 8"	33 Lbs.



## DUAL CABLE CLAMP

- For use with 1/8" diameter cable or wire

- Constructed of steel, mechanically plated

Part Number	Carton Qty	Carton Size	Carton Weight
SI-0987D	1000	8¼" x 8¼" x 5½"	5.5 Lbs.



## CORNER WALL BRACKET

- Used to dead end messenger drop cable at the building

- Constructed of galvanized steel for maximum corrosion protection

Part Number	Oval Retainer	Carton Qty	Carton Size	Carton Weight
SI-0064	No	50	9" x 7" x 6"	16 Lbs.
SI-0064R	Yes	50	9" x 7" x 6"	16.5 Lbs.



## SERVICE MAST STRAP

- Used to secure a cable at the house service mast

- Constructed of galvanized steel for maximum corrosion protection

Part Number	Type	Length	Carton Qty	Carton Size	Carton Weight
SI-0015	Galvanized Steel	13½"	100	18" x 9" x 7"	24 Lbs.
SI-0015-1	Buckle only		100	7" x 5" x 5"	14 Lbs.
SI-0015SS	Stainless Steel	13½"	100	18" x 9" x 7"	21 Lbs.



# DROPLINE HARDWARE

## HOUSE HOOK

- Used to secure drop wire or messenger cable at the pole or building
- Galvanized steel for maximum corrosion protection

Part Number	Type	Carton Qty	Carton Size	Carton Weight
SI-0010	P Type, 3 $\frac{3}{4}$ "	100	5" x 5" x 3"	7.5 Lbs.
SI-0010L	P Type, 4 $\frac{1}{2}$ "	100	6" x 6" x 4"	6.4 Lbs.
SI-0010CW	Wrenchable P Hook	100	9" x 7" x 7"	6.4 Lbs.
SI-0012	T House Hook, 3 Hole	100	9" x 7" x 6"	10 Lbs.
SI-0012-1	T House Hook, 1 Hole	100	9" x 7" x 6"	10 Lbs.
SI-0012-2	T House Hook, 2 Hole	100	9" x 7" x 6"	10 Lbs.
SI-0012ANG	T House Hook, Angled	100	9" x 7" x 6"	10 Lbs.
SI-0012COR	T House Hook, Corner	100	9" x 7" x 6"	10 Lbs.
SI-0014	with Oval Retainer	100	9" x 7" x 6"	13 Lbs.



## U CABLE CLIP

- Used to secure drop cables to wood or masonry surfaces
- Constructed of soft aluminum for pliability

Part Number	Cable Size	Carton Qty	Carton Size	Carton Weight
SI-0988-6	RG 6	1000	6" x 6" x 6"	1 Lb.
SI-0988-6G	#6 AWG	1000	6" x 6" x 6"	1 Lb.
SI-0988-6Q	RG 6 Quad	1000	6" x 6" x 6"	1 Lb.
SI-0988-11	RG 11	1000	6" x 6" x 6"	2 Lbs.
SI-0988-12G	#12 AWG	1000	6" x 6" x 6"	1 Lb.
SI-0988-59	RG 59	1000	6" x 6" x 6"	2 Lbs.
SI-0988-C5	Category 5	1000	5" x 6" x 5"	2 Lbs.



## CABLE CLIP

- Used to secure drop cable to wood or masonry surfaces
- Patent Pending
- Galvanized steel with pre-inserted self-tapping screw, drive pin, or hardened nail

Part Number	Cable Size	Carton Qty	Carton Size	Carton Weight
SI-0989-6	RG 6	1000	9" x 7" x 6"	14 Lbs.
SI-0989-6Q	RG 6 Quad	1000	9" x 7" x 6"	15 Lbs.
SI-0989-11	RG 11	1000	9" x 7" x 6"	16 Lbs.
SI-0989-59	RG 59	1000	9" x 7" x 6"	14 Lbs.
SI-0989D-6	RG 6	1000	9" x 7" x 6"	14 Lbs.
SI-0989D-6Q	RG 6 Quad	1000	9" x 7" x 6"	14 Lbs.
SI-0989D-11	RG 11	1000	9" x 7" x 6"	16 Lbs.
SI-0989D-59	RG 59	1000	9" x 7" x 6"	14 Lbs.
SI-0989N-6	RG 6	1000	9" x 7" x 6"	14 Lbs.
SI-0989N-6Q	RG 6 Quad	1000	9" x 7" x 6"	14 Lbs.
SI-0989N-11	RG 11	1000	9" x 7" x 6"	16 Lbs.
SI-0989N-59	RG 59	1000	9" x 7" x 6"	14 Lbs.



D suffix denotes Drive Pin version

N suffix denotes Hardened Nail version, 1" in length

## BASEBOARD CLIP

- Used to secure coaxial or twisted pair cable to baseboard
- Steel construction, enamel coated
- Patent pending
- Add suffix to part number to denote color: N = Neutral, W = White, B = Black

Part Number	Cable Size	Carton Qty	Carton Size	Carton Weight
SI-0991	RG 6	1000	6" x 4" x 4"	4 Lbs.
SI-0992	RG 6 Quad	1000	6" x 4" x 4"	4 Lbs.
SI-0993	Telephone	1000	6" x 4" x 4"	4 Lbs.
SI-0994	Category 5	1000	6" x 4" x 4"	4 Lbs.



## S CLIP

- Prevents messenger wire from separating from the drop cable
- Constructed of soft aluminum

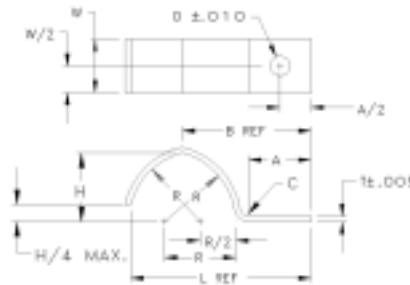
Part Number	Cable Size	Carton Qty	Carton Size	Carton Weight
SI-0990	RG 6	1000	6" x 6" x 6"	5 Lbs.
SI-0990-2	RG 11	1000	6" x 6" x 6"	5 Lbs.
SI-0990-3	Dual Cable	1000	13½" x 8¼" x 5½"	8 Lbs.



## CABLE CLAMP

Bellcore Specification: 6933

Part Number	PID Number
SI-6933-1	402 855 183
SI-6933-3	400 120 895
SI-6933-4	400 120 903
SI-6933-6	400 120 911
SI-6933-8	400 120 937
SI-6933-10	400 120 952
SI-6933-13	400 120 978
SI-6933-17	400 120 986
SI-6933-21	400 120 994
SI-6933-30	400 121 018
SI-6933-35	400 121 026



- Used to support cable, conduit or pipe to buildings and other surfaces
- Constructed from high grade steel, galvanized for corrosion resistance

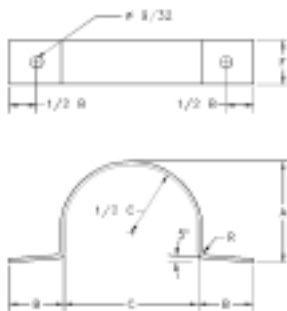
Part Number	Dimensions								Package Qty	Carton Qty	Carton Size	Carton Weight.
	(A)	(B)	(C)	(D)	(H)	(L)	(R)	(W)				
SI-6933-1	.312	.444	.031	.203	.093	.514	.093	.312	10	20000	16" x 16" x 16"	30 Lbs.
SI-6933-3	.312	.528	.031	.203	.188	.669	.188	.312	10	20000	12" x 12" x 8"	60 Lbs.
SI-6933-4	.312	.605	.062	.203	.250	.792	.250	.500	50	8000	12" x 12" x 8"	42 Lbs.
SI-6933-6	.438	.802	.062	.265	.344	1.060	.344	.500	50	5000	12" x 12" x 8"	34 Lbs.
SI-6933-8	.438	.872	.062	.280	.438	1.200	.438	.750	50	3000	12" x 12" x 8"	37 Lbs.
SI-6933-10	.500	1.091	.125	.280	.563	1.513	.563	.750	25	2000	12" x 12" x 8"	30 Lbs.
SI-6933-13	.625	1.372	.125	.280	.750	1.934	.750	.750	20	1500	12" x 12" x 8"	40 Lbs.
SI-6933-17	.875	1.828	.125	.280	.938	2.578	1.000	.750	25	1000	12" x 12" x 8"	60 Lbs.
SI-6933-21	1.188	2.412	.125	.280	1.250	3.396	1.312	.750	10	500	12" x 12" x 8"	63 Lbs.
SI-6933-25	1.188	2.564	.125	.280	1.566	3.763	1.530	.750	10	500	14" x 14" x 8"	63 Lbs.
SI-6933-30	1.188	2.740	.125	.280	1.688	4.052	1.750	.750	10	500	12" x 12" x 8"	69 Lbs.
SI-6933-35	1.325	3.209	.125	.280	2.062	4.803	2.125	.750	10	300	12" x 12" x 8"	50 Lbs.

## CABLE STRAP

Bellcore Specification: 6344

Part Number	PID Number
SI-6344-9	400 272 084
SI-6344-11	400 272 092
SI-6344-13	400 272 100
SI-6344-16	400 272 118
SI-6344-20	400 272 126
SI-6344-24	400 272 134
SI-6344-30	400 272 142
SI-6344-36	400 272 159
SI-6344-42	400 272 167
SI-6344-56	400 272 175
SI-6344-64	400 272 183

- Used to secure cable, pipe and conduit to various surfaces
- Constructed of galvanized steel



Part Number	Dimensions					Package Qty	Carton Qty	Carton Size	Carton Weight
	(A)	(B)	(C)	(F)	(R)				
SI-6344-9	1 3/32"	5/8"	9/16"	5/8"	3/32"	25	2000	14" x 10" x 8"	40 Lbs.
SI-6344-11	9/16"	3/4"	1 1/16"	5/8"	1/8"	25	1600	14" x 10" x 8"	32 Lbs.
SI-6344-13	1 1/16"	3/4"	1 3/16"	3/4"	1/8"	25	1200	14" x 10" x 8"	34 Lbs.
SI-6344-16	7/8"	7/8"	1"	3/4"	3/16"	25	800	14" x 10" x 8"	42 Lbs.
SI-6344-20	1 1/16"	1"	1 1/4"	3/4"	3/16"	25	600	14" x 10" x 8"	32 Lbs.
SI-6344-24	1 5/16"	1"	1 1/2"	3/4"	3/16"	25	500	14" x 10" x 8"	36 Lbs.
SI-6344-30	1 5/8"	1 1/8"	1 7/8"	7/8"	1/4"	25	500	14" x 10" x 8"	50 Lbs.
SI-6344-36	2"	1 1/8"	2 1/4"	7/8"	1/4"	25	400	14" x 10" x 8"	55 Lbs.
SI-6344-42	2 3/8"	1 1/8"	2 5/8"	7/8"	1/4"	25	400	14" x 10" x 8"	63 Lbs.
SI-6344-56	3"	1 1/4"	3 1/2"	1"	3/8"	25	300	14" x 10" x 8"	67 Lbs.
SI-6344-64	3 1/2"	1 1/4"	4"	1"	3/8"	25	300	14" x 10" x 8"	68 Lbs.

## C WIRE LOOP

Bellcore Specification: 7887

- Used with drive pins to secure drop wire to wood or masonry surfaces
- Constructed of galvanized steel

Part Number	Size	PID Number	Carton Qty	Carton Weight
SI-4609	1/2"	400 491 650	288	3 Lbs.
SI-4610	5/8"	-	288	4 Lbs.
SI-4611	7/8"	400 491 635	288	11 Lbs.
SI-4612	1 1/4"	400 491 619	900	56 Lbs.



## DRIVE PIN

Bellcore Specification: 7887

Part Number	PID Number
SI-6101	400 139 895
SI-6102	400 139 903
SI-6103	400 139 911
SI-6104	400 139 929
SI-6105	400 139 937
SI-6106	400 139 945
SI-6107	400 139 952
SI-6108	400 139 960

- Used to mount wire loops to masonry or wood in drop applications
- Constructed of hardened steel, galvanized
- Supplied with one washer assembled



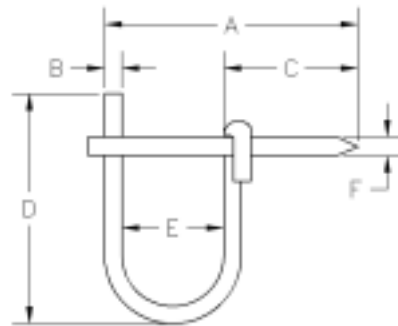
Part Number	Length	Carton Qty	Master Carton	Carton Size	Master Weight
SI-6101	1/2"	100	1000	2 1/4" x 1 3/4" x 3 1/8"	3 Lbs.
SI-6102	3/4"	100	1000	2 1/4" x 1 3/4" x 3 1/8"	4 Lbs.
SI-6103	1"	100	1000	2 1/2" x 1 1/2" x 3 1/2"	5 Lbs.
SI-6104	1 1/4"	100	1000	2 1/2" x 1 1/2" x 3 1/2"	6 Lbs.
SI-6105	1 1/2"	100	1000	2 3/4" x 1 1/2" x 4"	8 Lbs.
SI-6106	2"	100	1000	2 3/4" x 1 1/2" x 4"	9 Lbs.
SI-6107	2 1/2"	50	1000	3" x 1 3/4" x 4 3/8"	10 Lbs.
SI-6108	3"	50	1000	3" x 1 3/4" x 4 3/8"	11 Lbs.

## DRIVE RING

Bellcore Specification: 6835

Part Number	PID Number
SI-6861	400 260 584
SI-6862	400 260 592
SI-6863	401 024 609
SI-6864	400 260 626

- Used for temporary or permanent support of drop wires
- Constructed of galvanized steel for high durability



Part Number	Eye Diameter	Dimensions						Carton Qty	Master Qty	Master Size	Master Weight
		(A)	(B)	(C)	(D)	(E)	(F)				
SI-6861	1/2"	2 1/16"	.125"	1 3/8"	3/4"	1/2"	.120"	50	500	16" x 8" x 6"	9 Lbs.
SI-6862	5/8"	2 1/4"	.135"	1 7/16"	1 1/8"	5/8"	.165"	50	500	16" x 8" x 6"	15 Lbs.
SI-6863	7/8"	2 5/16"	.177"	1 1/2"	2 1/16"	7/8"	.165"	25	250	16" x 8" x 6"	15 Lbs.
SI-6864	1 1/4"	2 15/16"	.192"	1 5/8"	2 3/4"	1 1/4"	.203"	25	250	16" x 8" x 6"	22 Lbs.

## 3/4" GROUND BRACKET

- Used to secure a tap to the messenger strand
- Constructed of galvanized steel for high durability

Part Number	Carton Qty	Carton Size	Carton Weight
SI-0013	100	9" x 7" x 6"	13.5 Lbs.



## ALUMINUM CABLE TIE

- Used to support drop cables on the strand, pedestal, lock box, or bundling of cables at the head end
- Reusable with integral buckle
- Made of aluminum
- Smooth edges to prevent injury or damage to cable

Part Number	Size	Carton Qty	Carton Size	Carton Weight
SI-0939-7	7" x 1/4"	1000	9" x 5" x 5"	1 Lb.
SI-0939-10	10" x 1/4"	1000	9" x 5" x 5"	1 Lb.
SI-0939-12	12" x 1/4"	1000	16" x 8" x 6"	2 Lbs.



## ID TAG

- Used to identify cables
- Made of aluminum
- Smooth edges to prevent injury or damage to cable
- Available with paint (contact factory for color options)

Part Number	Description	Carton Qty	Carton Size	Carton Weight
SI-TAG-101	Reusable w/integral buckle	1000	5" x 5" x 6"	6 Lbs.
SI-TAG-102	Center hole accommodates up to RG 6Q cable for use in MDV applications	1000	5" x 5" x 6"	5 Lbs.



## PLASTIC CABLE CLAMP

- Secures cable to wood, masonry or metal surfaces
- Made of black nylon

Part Number	Inner Diameter	Clamp Mounting Hole Size	Carton Qty	Carton Size	Carton Weight
SI-0936	1/2"	1 1/4"	100	4" x 4" x 4"	1 Lb.
SI-0937	3/4"	1 1/4"	100	6" x 4" x 4"	1 Lb.
SI-0938	7/8"	1 1/4"	100	6" x 4" x 4"	1 Lb.



## PLASTIC ANCHOR

- Used to retain screws in wallboard or concrete walls

Part Number	Size	Bag Qty	Carton Qty	Carton Size	Carton Weight
SI-00E6	1/4" ø x 1 1/4"	1000	10,000	12" x 13" x 13"	16 Lbs.
SI-00E8	5/16" ø x 1 1/2"	1000	10,000	17" x 14" x 15"	30 Lbs.



## PLASTIC ANCHOR KIT

- Consists of: corrosion resistant zinc plated steel screws, high quality plastic wall anchors, and one carbide drill bit
- Kit comes with a reusable clear plastic box



Part Number	Items in Kit	Kit Qty	Carton Qty	Carton Size	Kit Weight	Carton Weight
SI-SK-8	100-D 10 Plastic Anchors	100	50	7" x 3 1/2" x 1 1/2"	0.62 Lbs.	36 Lbs.
	100-#8 x 1" Slot Hex Tapping Screws	100				
	1 3/16" x 4" Masonry Drill Bit	1				
SI-SK-10	100-D 12 Plastic Anchors	100	50	7" x 3 1/2" x 1 1/2"	0.62 Lbs.	52 Lbs.
	100-#10 x 1" Slot Hex Tapping Screws	100				
	1 1/4" x 4" Masonry Drill Bit	1				

## ANGLE SCREW

Bellcore Specification: 6432

Product Number	PID Number
SI-7005	400 262 044
SI-7006	400 262 051

- Used with porcelain knobs to support drop wire runs
- Constructed of galvanized steel
- Wood screw thread on one end and a machine screw thread on the other



Part Number	Thread Size Machine Screw	Wood Screw	Package Qty	Carton Qty	Carton Size	Carton Weight
SI-7005	5/16"	5/16" - 18	10	300	10" x 8" x 8"	30 Lbs.
SI-7006	3/8"	3/8" - 16	10	300	10" x 8" x 8"	48 Lbs.

## TWO POST TERMINAL

- Designed for service drop applications of single pair distribution wire
- Constructed of aluminum and porcelain with brass grounding posts

Part Number	Box Qty	Carton Qty	Carton Size	Carton Weight
SI-7501	1	100	18" x 16" x 14"	40 Lbs.



Senior Industries Bonding & Grounding Products are engineered and manufactured in accordance with the National Electric Code and are UL and CSA listed.

From the first choice for bond attachment to the last alternative, Senior Industries products offer reliable solutions and ease of installation, backed with installation training to ensure the bonding effectiveness at all times.

For technical support, installation information and special requirements please contact our Inside Sales Team at: 1-800-350-1650, or via e-mail at: sales@seniorindustries.com

## GROUND ROD CLAMP

Product Number	PID Number
SI-0038	401 140 546
SI-0038C	400 503 403

- Used to provide a solderless connection between a Number 6 ground wire and a ground rod
- The clamp is constructed of cast bronze with a  $\frac{3}{8}$ " hexagonal head stud
- Available in vibration proof, anti-loosening versions
- UL and CSA listed



Part Number	Type	Vibration Proof/ Anti-Loosening	Ground Rod Diameter	Wire Range	Carton Quantity	Carton Size	Carton Weight
SI-0038	Heavy Duty	No	$\frac{3}{8}$ "	8 to 1/0	300	10" x 9" x 6"	42 Lbs.
SI-0038C	Economy	No	$\frac{3}{8}$ "	8 to 1/0	400	11" x 10" x 6"	42 Lbs.
SI-0038CN	Economy	Yes	$\frac{5}{8}$ "	8 to 1/0	400	11" x 10" x 6"	42 Lbs.
SI-0038N	Heavy Duty	Yes	$\frac{5}{8}$ "	8 to 1/0	300	10" x 9" x 6"	42 Lbs.
SI-2142	Heavy Duty	No	$\frac{5}{8}$ "	10 to 6	25	6" x 4" x 4"	11 Lbs.

## GROUNDING CONNECTOR

- Used to provide a solderless connection between ground wires
- Vise-type connectors made of corrosion resistant, high strength bronze
- Fast, easy installation
- Vibration proof connection
- V-grooves properly align the conductors for maximum engagement
- UL and CSA listed



Bellcore Specification: 8980

Product Number	PID Number
SI-0081 (H1)	403 370 075
SI-0082 (H2)	402 689 244

- $\frac{1}{4}$  - 28 bolt size,  $\frac{3}{8}$ " hex
- $\frac{1}{4}$  - 28 bolt size,  $\frac{3}{8}$ " hex

Part Number	.....Wire Range AWG.....		Package Quantity	Carton Quantity	Carton Size	Carton Weight
	Min. Pair	Max. Pair				
SI-0081 (H1)	#12 SOL to #8 SOL	#6 SOL to #6 SOL	5	500	10" x 6" x 6"	36 Lbs.
SI-0082 (H2)	#8 SOL to #5 SOL	1/0 to #4 SOL	5	375	10" x 8" x 6"	42 Lbs.

Part Number	Bellcore Specification	PID Number
SI-2169	7796-X-4	700 042 484
SI-2170	7796-X-6	402 841 175

Part Number	.....Wire Range AWG.....		Bolt Size	Hex (In)	Carton Quantity	Carton Size	Carton Weight
	Solid	Strand					
SI-2169	4	4	$\frac{5}{16}$ - 24	$\frac{3}{16}$	350	9" x 9" x 7"	56 Lbs.
SI-2169M	4	4	$\frac{5}{16}$ - 24	$\frac{7}{16}$	350	9" x 9" x 7"	50 Lbs.
SI-2169SS	4	4	$\frac{5}{16}$ - 24	$\frac{3}{16}$	250	9" x 9" x 7"	41 Lbs.
SI-2170	6	8	$\frac{1}{4}$ - 28	$\frac{3}{8}$	500	7" x 7" x 5 $\frac{1}{2}$ "	40 Lbs.

## Messenger Grounding Connector

**Bellcore Specification:** 8270  
**PID Number:** 400 127 585

- Designed specifically for connecting a ground wire to figure 8 messenger strand, where self-supporting cable is used

- The teeth of the connector penetrate the insulation of the messenger to form a positive ground
- Constructed of tin-plated bronze



Part Number	Bolt Size	Hex (In)	Carton Qty	Carton Size	Carton Weight
SI-2172	5/16" - 24	5/16"	50	6" x 4" x 4"	12 Lbs.

## GROUND BLOCK

- Provides ground path between drop cable and ground wire
- Stainless steel construction
- New ground clip mechanism provides for fast and easy termination to the ground wire
- Other variations available
- Includes one 2.2 GHz F81 connector installed
- UL and CSA listed
- Patented

Part Number	Description	Carton Qty	Carton Size	Carton Weight
SI-GB-10	Single, 1 F Connector	120	10" x 10" x 6"	10 Lbs.
SI-GB-20	Dual, 1 F Connector	100	12" x 12" x 6"	12 Lbs.
SI-GB-22	Dual, 2 F Connectors	100	12" x 12" x 6"	14 Lbs.
SI-GB-50	Single, 1 Sealed Gasket F Connector	100	12" x 12" x 6"	10 Lbs.
SI-GB-60	Dual, 1 Sealed Gasket F Connector	100	12" x 12" x 6"	12 Lbs.
SI-GB-65	Dual, 2 Sealed Gasket F Connectors	100	12" x 12" x 6"	14 Lbs.

Ground blocks available without F connector



## BONDING RIBBON CONNECTOR

**PID Number:** 709 002 420  
 400 127 589

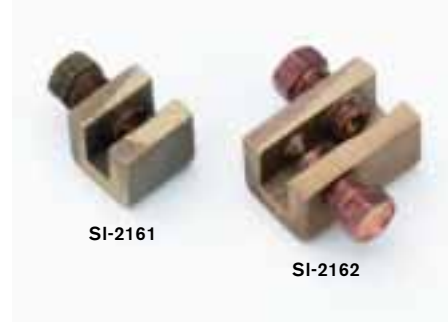
- Provides a solderless connection between bonding ribbons

- Accommodates up to three bonding ribbons and one #6 AWG wire
- Constructed of tin plated bronze
- Bolt size: 1/4" diameter with a 3/8" hex head



Part Number	Carton Qty	Carton Size	Master Qty	Master Size	Master Weight
SI-2159	50	3" x 4" x 5"	500	16" x 8" x 6"	41 Lbs.

- No special preparation/cleaning of the surfaces required to electrically join two copper bonding ribbons, the patented screw design (cone and screw tip) penetrates corroded surfaces
- Non-corrosive all bronze construction
- Eliminates the need to solder the ribbons
- UL listed
- Patented



Part Number	Type	Carton Qty	Carton Size	Master Qty	Master Size	Master Weight
SI-2161	Single	50	3" x 4" x 5"	300	10" x 8" x 6"	21 Lbs.
SI-2162	Double	50	3" x 4" x 5"	300	10" x 8" x 6"	34 Lbs.

## DISTRIBUTION CONNECTOR

- Used to provide a solderless connection between ground wires
- Vise-type connectors made of corrosion resistant, high strength bronze
- Fast, easy installation
- Vibration proof connection
- V-grooves properly align the conductors for maximum engagement
- UL and CSA listed

Part Number	.....Conductor Range.....		Bolt Size	Hex (In)	Carton Quantity	Carton Size	Carton Weight
	Min.	Max.					
SI-2140	2-#2 SOL	2-1/0 SOL	3/8" - 24	3/16"	25	6" x 4" x 4"	10 Lbs.
SI-2141	2-#4 SOL	2-#2 SOL	5/16" - 24	3/16"	25	3" x 4" x 5"	5.5 Lbs.
SI-2143	4/0 SOL	4/0 STR	3/8" - 24	3/16"	25	6" x 4" x 4"	6 Lbs.



PID Number: 000 204 784

- Design allows for easy tapping or covering of the connection
- Flat ribs on the back of the connector provides a secure grip for hot stick installations
- Designed to meet all ANSI specifications
- Clamp will close on any combination of two conductors shown in the chart below



Part Number	.....Conductor Range.....			.....Approximate..... .....Dimensions.....			Bolt Size	Hex (In)	Carton Quantity	Carton Weight
	Max. Sol.	.....Min..... Str.	Sol.	A	B	C				
SI-2173	1/0	1	8	1 1/2"	1 3/8"	1"	3/8" - 24	3/16"	50	12 Lbs.

## STRUCTURE GROUND CLAMP

PID Number: 000 213 140

- Used to provide an electrical connection to trailers, mobile homes or other beam structures
- High strength bronze casting
- Will accept wire range from #12 AWG to #6 AWG including bonding ribbon
- UL and CSA listed

Part Number	Carton Qty	Master Qty	Carton Size	Carton Weight
SI-2145	20	200	16" x 8" x 6"	56 Lbs.
SI-2145A	20	200	16" x 8" x 6"	56 Lbs.



PID Number: 000 213 140

- Provides an electrical bond between a ground wire and flat surface, up to 3/8" thick, regardless of surface condition
- High strength bronze
- Patented screw design (cone & tip arrangement) for intimate ground to base metal
- Separate screw to attach ground wires #14 to #6 AWG, stranded or solid, that can be attached or removed without loosening the clamp
- The clamp installs with a 3/16" hex drive wrench and a 3/8" hex drive wrench is used to set the ground screw
- The SI-2160S provides an elongated hole for connecting multiple wires/bonding ribbon
- UL and CSA listed
- Patented

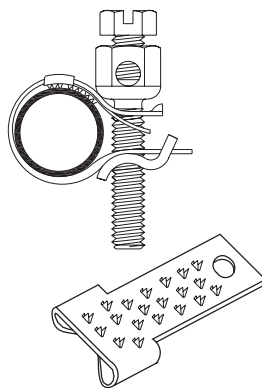


Part Number	Type	Carton Qty	Carton Size	Master Qty	Master Size	Master Weight
SI-2160	Structure Ground Clamp	10	3" x 4" x 5"	100	16" x 8" x 6"	41 Lbs.
SI-2160S	Structure Ground Clamp with Elongated Hole	10	3" x 4" x 5"	100	16" x 8" x 6"	41 Lbs.

## UNIVERSAL GROUND STRAP CLAMP

PID Number: 243 002 540

- Positive grounding connection to water pipes, electrical conduits & ground rods
- Features new captive nut, which prevents loss of nut during installation
- Features patented curved nut, which gives a more reliable, secure connection to pipe
- Set-screw stud assembly is compatible with a standard terminal wrench
- Set-screw stud assembly allows ground wire changes without loosening clamp
- Available in 6, 9, or 12 inch lengths with copper or galvanized steel straps
- Available with a penetrator option to ensure a positive, reliable ground
- Can accommodate ground wires up to a No. 6
- UL and CSA listed
- Patented



SI-0954 series clamps also available with penetrator. To order, add "P" suffix to part number.



Part Number	Type	Strap Material	Strap Length	Pipe Size Dia. (In)	Carton Quantity	Carton Size	Carton Weight
SI-0954-6	Premium	Copper	6"	½" - 1"	25	4¼" x 4¼" x 12"	2 Lbs.
SI-0954-9	Premium	Copper	9"	½" - 2¼"	25	4¼" x 4¼" x 12"	3 Lbs.
SI-0954-12	Premium	Copper	12"	½" - 3"	25	4¼" x 4¼" x 12"	4 Lbs.
SI-0954G-6	Premium	Galvanized Steel	6"	½" - 1"	25	4¼" x 4¼" x 12"	2 Lbs.
SI-0954G-9	Premium	Galvanized Steel	9"	½" - 2¼"	25	4¼" x 4¼" x 12"	3 Lbs.
SI-0954G-12	Premium	Galvanized Steel	12"	½" - 3"	25	4¼" x 4¼" x 12"	4 Lbs.
SI-0958-6	Economy	Copper	6"	½" - 1"	100	18" x 16" x 14"	5 Lbs.
SI-0958-9	Economy	Copper	9"	½" - 2¼"	100	18" x 16" x 14"	6 Lbs.
SI-0958-12	Economy	Copper	12"	½" - 3"	100	18" x 16" x 14"	7 Lbs.
SI-0958-6G	Economy	Galvanized Steel	6"	½" - 1"	100	18" x 16" x 14"	5 Lbs.
SI-0958-9G	Economy	Galvanized Steel	9"	½" - 2¼"	100	18" x 16" x 14"	6 Lbs.
SI-0958-12G	Economy	Galvanized Steel	12"	½" - 3"	100	18" x 16" x 14"	7 Lbs.

## B GROUND WIRE CLAMP

Bellcore Specification: 8451

- B ground wire clamp is used to secure ground wires, #6 - #12 AWG
- Constructed from high grade steel galvanized for corrosion resistance

Part Number	Carton Qty	Carton Size	Carton Weight
SI-0960	500	3" x 3" x 3"	1.5 Lbs.



## BRONZE PIPE GROUND CLAMP

- Ideal in bonding copper ground wire to galvanized or copper pipe and conduit
- Will accommodate copper wire from #10 AWG to #2 AWG
- Commonly used with #6 AWG copper wire in power service grounds

Part Number	Size	Carton Qty	Carton Size	Carton Weight
SI-5947	1¼" - 2"	100	9" x 7" x 6"	40 Lbs.
SI-5948	½" - 1"	250	9" x 7" x 6"	44 Lbs.
SI-5948G	½" - 1"	250	9" x 7" x 6"	44 Lbs.



## SPLIT BOLT

- High strength corrosion resistant copper alloy connectors for use in bonding applications
- Designed to provide high clamping force
- UL and CSA listed

Part Number	Size	Package Quantity	Package Weight	Carton Quantity	Carton Weight
SI-2002	S-2	50	10 Lbs.	400	56 Lbs.
SI-2004	S-4	100	7 Lbs.	800	53 Lbs.
SI-2006	S-6	100	5 Lbs.	800	40 Lbs.
SI-2008	S-8	200	6 Lbs.	1600	47 Lbs.



## METER BOX CLAMP

Part Number	PID Number
SI-2166SS	000 134 971
SI-2166LS	000 134 989

- Engineered to provide an electrical ground connection to customer meter boxes without the need for a ground rod, ground rod clamp, or long ground wire runs
- Patented screw design (cone & tip arrangement) for intimate ground to base metal
- No preparation of meter box surface required
- No need to loosen clamp to attach or remove ground wires
- UL and CSA listed
- Patented (Patent pending on SI-2167GC)



Part Number	Type	Material	Carton Quantity	Carton Size	Carton Weight
SI-2154	Adjustable Bracket	Galvanized Steel	35	4 1/4" x 4 1/4" x 12"	23 Lbs.
SI-2163	Plate Style	Stainless Steel	50	4 1/4" x 4 1/4" x 12"	4 Lbs.
SI-2165	Adjustable Bracket	Stainless Steel	35	4 1/4" x 4 1/4" x 12"	21 Lbs.
SI-2166SG	Adjustable Bracket, Short	Galvanized Steel	20	4 1/4" x 4 1/4" x 12"	10 Lbs.
SI-2166LG	Adjustable Bracket, Long	Galvanized Steel	20	4 1/4" x 4 1/4" x 12"	12 Lbs.
SI-2166SS	Adjustable Bracket, Short	Stainless Steel	20	4 1/4" x 4 1/4" x 12"	10 Lbs.
SI-2166LS	Adjustable Bracket, Long	Stainless Steel	20	4 1/4" x 4 1/4" x 12"	13 Lbs.
SI-2167	Lip Mount	Powder Coated Spring Steel	50/500	3" x 4" x 5 1/16" x 8" x 6"	3.5 Lbs./35 Lbs.
SI-2167C	Lip Mount Economy	Powder Coated Spring Steel	50/500	3" x 4" x 5 1/16" x 8" x 6"	3.5 Lbs./35 Lbs.
SI-2167GC	Lip Mount w/Ground Clip	Stainless Steel	50/500	3" x 4" x 5 1/16" x 8" x 6"	3.5 Lbs./35 Lbs.
SI-2167SLM-NL	Side Lip Mount	Powder Coated Steel	50/600	5" x 5" x 5 1/16" x 11" x 11"	4.4 Lbs./55 Lbs.
SI-2168C	Corner Mount	Steel, Zinc with Yellow Dichromate	50	6" x 4" x 4"	3 Lbs.

# BONDING AND GROUNDING PRODUCTS

## KUL BONDING CLAMP

- Used to bond #6 copper wire to ¼" or ⅝" strand
- Constructed of high strength copper alloy
- Installation does not require removal of bolt
- Tin plated for use with dissimilar metals
- Installs with standard terminal wrench
- UL and CSA listed

Part Number	Size	Quantity	Carton Size	Carton Weight
SI-2174	6 SOL - 1/0 STR	100	13" x 9" x 6"	15 Lbs.



## TAP CLAMP

- Used to make an electrical connection between ground wire and messenger or guy strands
- Up to #6 AWG ground wire
- Up to 7/16" strand size
- Constructed of aluminum
- UL and CSA listed

Part Number	Carton Quantity	Carton Size	Weight
SI-2174TC	100	13 3/4" x 4 3/4" x 5 1/2"	13 Lbs.



## BONDING RIBBON CLAMP

Bellcore Specification: 6567  
PID Number: 400 121 364

- Used for attaching bonding ribbon to manhole walls and roofs
- Constructed of lead

Part Number	Carton Qty	Carton Size	Carton Weight
SI-1720	200	2 3/4" x 1 1/8" x 3 1/8"	5 Lbs.



## B STRAND GROUND CLAMP

Bellcore Specification: 7182  
PID Number: 000 542 091

- Used to secure cable sheath, bonding ribbon or ground wire to the messenger strand
- Internal self seating compression plate to evenly distribute clamping pressure
- Galvanized steel for maximum corrosion protection

Part Number	Carton Qty	Carton Size	Carton Weight
SI-1630	100	9" x 7" x 7"	60 Lbs.



## COUPLING

- Used to join two or more sections of ⅝" ground rods
- Extra long for greater engagement of ground rods
- Extra length prevents loosening while being pounded into the ground

Part Number	Material	Carton Quantity	Carton Size	Carton Weight
SI-2290	Bronze	200	10" x 9" x 7"	50 Lbs.
SI-3910	Galvanized Steel	200	10" x 9" x 7"	50 Lbs.



## COPPER BOND BAR

Bellcore Specification: 4079  
PID Number: 045 022 688

- Provides low electrical resistance connection for bonding splices
- ½" wide tin-plated copper strap, #6 AWG conductor equivalent
- Mounts to variably spaced bond studs and standard terminal blocks

Part Number	Feet/Roll	Rolls/Carton	Carton Size	Carton Weight
SI-3720	25'	10	8" x 8" x 6"	19 Lbs.



## BONDING RIBBON

Bellcore Specification: 6868  
PID Number: 400 260 337

- Used for bonding cable
- Annealed solid copper ribbon
- $\frac{3}{8}$ " wide by  $\frac{1}{16}$ " thick
- Rolled edges and tinned finish

Part Number	Lbs/Spool	Spools/Carton	Carton Size	Carton Weight
SI-1638	5 Lbs.	10	12" x 12" x 5"	50 Lbs.



## BOND BRAID

Bellcore Specification: 1036

- Used in splicing cable shield openings within pedestal terminals or splice closures
- Flat, tin plated copper braided conductor,  $\frac{1}{2}$ " wide, .070" thick, that provides a low electrical resistance connection
- Equivalent to a number 6 AWG copper conductor
- The braid is strong enough to be effective in relieving the strain across a spliced cable

Part Number	Feet/Reel	Reels/Carton	Carton Size	Carton Weight
SI-7171	100'	5	14" x 14" x 8"	43 Lbs.



## BOND BRAID WITH EYELETS

PID Number: 701 227 456

- Eyelets are  $\frac{1}{4}$ " diameter and spaced every three inches

Part Number	Type	Feet per Pack	Packs per Carton	Carton Size	Carton Weight
SI-7177-1	Without Web Guard	25'	7	13" x 8" x 8"	21 Lbs.



## GROUND WIRE

- Used in butt grounds, power service grounds
- Annealed solid copper conductor, bare or tinned
- Number 6 AWG conductor
- UL and CSA listed

Part Number	AWG Size	Bare/Tinned	Feet per Spool	Spools per Carton	Carton Size	Carton Weight
SI-9541	6	Bare	300	2	12" x 12" x 8 $\frac{1}{2}$ "	55 Lbs.
SI-9542	2	Tinned	250	1	12" x 12" x 6"	53 Lbs.



## ID GROUND TAG

- Used to identify grounding connections
- Made of aluminum, green paint

Part Number	Carton Qty	Carton Size	Carton Weight
SI-TAG-100-G	2000	14" x 5 $\frac{1}{2}$ " x 5 $\frac{1}{2}$ "	12 Lbs.



# BONDING AND GROUNDING PRODUCTS

## MULTIPLE GROUND BAR

- Used to bond multiple ground wires in MDU applications
- Nickel plated brass construction
- Grounding clip/screw assembly is stainless steel
- Stud/set screw brass, nickel plated

Part Number	Carton Qty	Carton Size	Carton Weight
SI-2010	50	10½" x 4¼" x 9"	17 Lbs.



## TAP GROUNDING CLAMP

- Used to bond taps
- Galvanized steel bracket
- Stud/set screw brass, nickel plated

Part Number	Carton Qty	Carton Size	Carton Weight
SI-2020	200	14" x 5" x 5¾"	30 Lbs.



## DEMARCATON PLATE

- Used to bond drop cable in MDU applications
- 8 ports
- -81 version is populated with F connectors
- Aluminum construction
- Stud/set screw brass, nickel plated

Part Number	Carton Qty	Carton Size	Carton Weight
SI-2030	100	14" x 5½" x 6½"	9 Lbs.
SI-2030-81	100	14" x 5½" x 6½"	11 Lbs.



- Used to bond drop cable in MDU applications
- 16 ports
- -81 version is populated with F connectors
- Aluminum construction
- Stud/set screw brass, nickel plated

Part Number	Carton Qty	Carton Size	Carton Weight
SI-2040	50	14" x 5½" x 6½"	7 Lbs.
SI-2040-81	50	14" x 5½" x 6½"	9 Lbs.



**Senior Industries Pole Line Hardware is engineered and manufactured for durability, reliability and ease of installation.** Our rigid quality control standards assure you of the highest quality hardware from order to order.

Senior Industries Pole Line Hardware conforms to the latest revisions of the ASTM and Bellcore specifications.

For technical support, installation information and special requirements please contact our Inside Sales Team at: 1-800-350-1650, or via e-mail at: [sales@seniorindustries.com](mailto:sales@seniorindustries.com)

## DRIVE HOOK

**Bellcore Specification:** 7365

**Product Number**      **PID Number:**  
SI-3000                      400 314 530

- Used for securing drop wire attachments and service drops
- Rolled fether drive threads and pilot point for easy starting
- Drive hooks are galvanized for long service life

Part Number	Size	Carton Qty	Carton Size	Carton Weight
SI-3000	7/16" x 4 3/4"	200	9" x 9" x 7"	53 Lbs.
SI-3001	5/16" x 3 1/2"	500	11" x 11" x 7 1/2"	46 Lbs.



## CABLE SUSPENSION CLAMP

**Bellcore Specification:** 8623

**PID Number:** 400 762 282

- Designed to securely grip messenger cable
- Clamps accept 1/4" (6.6M) to 5/8" (16M) messenger strand

- Made from rolled steel, galvanized for maximum corrosion protection
- Furnished with two 1/2" track bolts and square nuts
- Mount messenger assembly to pole with a 5/8" bolt thru center hole

Part Number	Carton Qty	Carton Size	Carton Weight
SI-1740	25	9" x 9" x 7"	45 Lbs.



## Curved Cable Suspension Clamp

**Product Number:** SI-1750

**PID Number:** 400 762 274

Part Number	Type	Carton Qty	Carton Size	Carton Weight
SI-1750	Heavy Duty	10	9" x 9" x 7"	36 Lbs.
SI-1755	Economy	25	9" x 9" x 7"	53 Lbs.



## GUY HOOK

**Bellcore Specification:** 7909

**Part Number**      **PID Number**  
SI-4425                      400 149 910  
SI-4426                      400 149 928

- Used for down and span guys
- Constructed of ductile iron, hot dip galvanized per ASTM A-153
- Features smooth grooves to eliminate chafing of the strand
- Accepts a wide range of strand diameters

Part Number	Size	Carton Qty	Carton Size	Carton Weight
SI-4425	5/8"	25	12" x 9" x 5"	41 Lbs.
SI-4426	3/4"	25	14" x 10" x 8"	44 Lbs.



## THIMBLE EYE NUT

Bellcore Specification: 6228

Part Number	PID Number
SI-4405	400 162 913
SI-4406	400 162 921

- Thimbleye nuts are used in dead end guying
- Constructed of ductile iron, hot dip galvanized per ASTM A-153
- Feature smooth grooves to eliminate chafing of the strand

Part Number	Size	Carton Qty	Carton Size	Carton Weight
SI-4405	5/8"	50	11 1/2" x 9" x 5 1/2"	39 Lbs.
SI-4406	3/4"	50	11 1/2" x 9" x 5 1/2"	44 Lbs.



## LASHING SUPPORT STRAP AND SPACER

### Lashing Strap

Bellcore Specification: 7169

Product Number	PID Number
SI-7511-16	400 272 985
SI-7511-22	400 272 993
SI-7511-28	400 273 009
SI-7511-34	400 273 017
SI-7511-45	400 273 025
SI-7511-66	400 273 033
SI-7511-78	400 273 041

- Used to strap CATV and telephone cable to messenger strand in aerial construction
- Constructed of non-corrosive 304 stainless steel
- Straps are .010" thickness x 3/4" wide and available in lengths from 10" to 78"
- Strap edges are processed to be smooth and free of burrs
- Used with Senior Industries' SI-7512 Spacer



Part Number	Length		Maximum Assembly	Carton Qty	Carton Weight
	Diameter	Circumference			
SI-7511-10	10"	3/4"	2 5/16"	500	14.5 Lbs.
SI-7511-16	16"	1 3/16"	3 5/8"	500	20 Lbs.
SI-7511-22	22"	2"	6 3/16"	300	16 Lbs.
SI-7511-28	28"	2 5/8"	8 5/16"	500	34 Lbs.
SI-7511-34	34"	3 1/8"	10"	200	18 Lbs.
SI-7511-45	45"	4"	12 1/2"	200	21 Lbs.
SI-7511-50	50"	5"	15 3/16"	200	23 Lbs.
SI-7511-66	66"	6 1/2"	20 1/2"	200	29 Lbs.
SI-7511-78	78"	7 1/2"	23"	300	55 Lbs.

### Lashing Strap Spacer

High Density Polyethylene, UV Stabilized

Part Number	Height	Carton Qty	Carton Weight
SI-7512-025	0.25"	2000	17 Lbs.
SI-7512-050	0.50"	2000	25 Lbs.
SI-7512-075	0.75"	2000	32 Lbs.
SI-7512-100	1.00"	1000	24 Lbs.
SI-7512-125	1.25"	1000	30 Lbs.
SI-7512-150	1.50"	1000	36 Lbs.
SI-7512-175	1.75"	500	21 Lbs.
SI-7512-200	2.00"	500	24 Lbs.
SI-7512-225	2.25"	500	27 Lbs.
SI-7512-250	2.50"	250	15 Lbs.
SI-7512-275	2.75"	250	17 Lbs.
SI-7512-300	3.00"	250	18 Lbs.
SI-7512-325	3.25"	250	20 Lbs.



## LASHING WIRE

- Used to support CATV and telephone cable to messenger strand in aerial construction
- Made from high strength non-corrosive stainless steel
- Wire is fully annealed and wax coated for ease of use

Part Number	Wire Diameter	Coil Length	SS Type	Coils per Carton	Carton Weight
SI-9603	.045"	1200 ft.	430	6	40 Lbs.
SI-9607	.045"	1200 ft.	316	6	40 Lbs.
SI-9609	.045"	1200 ft.	302	6	40 Lbs.



## D CABLE LASHING WIRE CLAMP

**Bellcore Specification:** 7886

**PID Number:** 400 121 349

- Accepts 1/4" (6.6M) to 3/8" (16M) messenger strand

- Designed for easy and permanent termination of lashing wire to messenger strand
- Constructed of high strength steel, galvanized for maximum protection

Part Number	Carton Qty	Carton Size	Carton Weight
SI-2175	50	7" x 5 1/2" x 5"	7 Lbs.



## LASHING WIRE CLAMP

- Accepts 1/4" (6.6M) messenger strand
- Designed for easy and permanent termination of lashing wire to messenger strand
- Constructed of high strength steel, galvanized for maximum protection

Part Number	Carton Qty	Carton Size	Carton Weight
SI-2176	100	9" x 5 1/2" x 5"	14 Lbs.



## POLE STEP

### Pole Step, Hollow Pole

- For use with steel or composite poles
- All stainless steel design
- Rugged and reliable
- Mounts into a 1 3/8" diameter hole
- Designed for use on 10" to 20" diameter poles
- Captive design prevents the dropping of loose parts during installation
- Keyed mounting plate provides positive alignment of pole step to pole
- Easy to install
- Patented

Part Number	Carton Qty	Carton Size	Carton Weight
SI-0040	20	12" x 12" x 7"	39 Lbs.



### Removable Pole Step, Hollow Pole

- For use with SI-0048
- Galvanized steel construction
- Rugged and reliable
- Easy to install
- Patented

Part Number	Carton Qty	Carton Size	Carton Weight
SI-0047	20	12" x 12" x 7"	15 Lbs.



## Removable Pole Step Mounting Assembly

- For use with steel or composite poles
- Stainless steel design
- Rugged and reliable
- Mounts into a 1<sup>3</sup>/<sub>16</sub>" diameter hole
- Designed for use on 10" to 20" diameter poles
- Plate, nut, and washer are captive on pole step rod and cannot be removed
- Captive design prevents the dropping of loose parts during installation
- Keyed mounting plate provides positive alignment of pole step to pole
- Easy to install
- Patented

Part Number	Carton Qty	Carton Size	Carton Weight
SI-0048	20	12" x 12" x 7"	30 Lbs.



## Removable Pole Step, Complete

- Combines SI-0047 and SI-0048 in one package
- For use with steel or composite poles
- Rugged and reliable
- Easy to install
- Patented

Part Number	Carton Qty	Carton Size	Carton Weight
SI-0041	20	14"x14"x9"	45 Lbs.



## Pole Step, Wood Pole

- For use with wood poles
- Galvanized steel construction
- Rugged and reliable
- Flat driving surface and fether drive thread for easy and secure installation

Part Number	Carton Qty	Carton Size	Carton Weight
SI-0042	20	10" x 8" x 6"	20 Lbs.



## CABLE GUARD STRAP

Bellcore Specification: 6789

Part Number	PID Number
SI-0075	400 314 092
SI-0076	400 314 761
SI-0077	400 314 779
SI-0078	400 314 787
SI-0079	400 314 795

- Galvanized steel construction
- Used in securing U-cable guards to poles



Part Number	Dimensions								Package Qty	Carton Qty	Carton Size	Carton Weight
	(A)	(B)	(C)	(D)	(E)	(F)	(R)	(S)				
SI-0075	1 <sup>1</sup> / <sub>2</sub> "	1 <sup>1</sup> / <sub>16</sub> "	3/4"	1 <sup>1</sup> / <sub>8</sub> "	1/8"	9/32"	1/4"	3/8"	25	450	12" x 12" x 8"	52 Lbs.
SI-0076	1 <sup>1</sup> / <sub>2</sub> "	1 <sup>1</sup> / <sub>2</sub> "	3/4"	1 <sup>1</sup> / <sub>16</sub> "	1/8"	9/32"	3/8"	3/8"	25	300	14" x 10" x 8"	42 Lbs.
SI-0077	1 <sup>1</sup> / <sub>2</sub> "	2 <sup>3</sup> / <sub>8</sub> "	3/4"	2 <sup>5</sup> / <sub>16</sub> "	1/8"	9/32"	3/8"	3/8"	25	150	14" x 14" x 6"	32 Lbs.
SI-0078	1 <sup>5</sup> / <sub>16</sub> "	3 <sup>3</sup> / <sub>8</sub> "	1"	3 <sup>5</sup> / <sub>16</sub> "	3/16"	1 <sup>1</sup> / <sub>32</sub> "	3/8"	1/2"	25	25	8" x 6" x 6"	12 Lbs.
SI-0079	5/16"	3 <sup>7</sup> / <sub>8</sub> "	1"	3 <sup>13</sup> / <sub>16</sub> "	3/16"	1 <sup>1</sup> / <sub>32</sub> "	3/8"	1/2"	25	25	8" x 6" x 6"	19 Lbs.

## ALUMINUM DAMPER

PID Number: 040 249 047

- Prevents cable dancing
- Can be used with both lashed and self-supporting aerial cable lines
- Damper comes with 2 D lashing clamps and 2 lashing supports

Part Number	Carton Qty	Carton Size	Carton Weight
SI-2302	1	36 <sup>1</sup> / <sub>2</sub> " x 11 <sup>1</sup> / <sub>4</sub> " x 15"	2 Lbs.



## TAP BRACKET

- Provides a means to secure a tap to messenger strand
- Formed from premium-grade aluminum or galvanized steel
- Jaws will attach to strand ranging from ¼" to ⅝" diameter
- Allows electronic device to be mounted 3" to 9" from strand

Part Number	Type	Size	Package Qty	Package Weight
SI-TAP-250	Single	2½"	50	11 Lbs.
SI-TAP-900	Adjustable	3 - 9"	50	12 Lbs.
SI-TAP-250G	Single	2½"	50	11 Lbs.
SI-TAP-250GC	Single	2½"	50	11 Lbs.
SI-TAP-900G	Adjustable	3 - 9"	50	12.5 Lbs.

**G** suffix denotes Galvanized version  
**GC** suffix denotes Ground Clip version



## REINFORCING STRAP

- Used in poleline construction as an added support for suspension clamps
- Constructed of galvanized steel

Part Number	Carton Qty	Carton Size	Carton Weight
SI-0088A	100	8½" x 8" x 4"	36 Lbs.



## GUY ATTACHMENT

- Used to fasten guys to poles
- Constructed of galvanized steel

Part Number	Carton Qty	Carton Size	Carton Weight
SI-4430	100	10" x 8½" x 6¾"	63 Lbs.



## DRIVE SCREW

Bellcore Specification: 6281

Part Number	PID Number	Part Number	PID Number
SI-0029	400 262 143	SI-0034	400 262 192
SI-0030	400 262 150	SI-0032	400 262 176
SI-6228	400 262 188	SI-0033	400 262 184
SI-0031	400 262 168		

Part Number	Type	Size	Carton Qty	Carton Size	Carton Weight
SI-0029	Fetter Drive, Regular Pt.	¼" x 2½"	2500	16" x 11" x 8"	88 Lbs.
SI-0030	Fetter Drive, Regular Pt.	⅝" x 3"	800	14" x 10" x 8"	52 Lbs.
SI-6229	Fetter Drive, Regular Pt.	⅜" x 3"	600	10¼" x 10¼" x 8"	53 Lbs.
SI-6228	Fetter Drive, Regular Pt.	⅜" x 4"	500	11" x 10" x 8"	64 Lbs.
SI-6238	Fetter Drive, Regular Pt.	½" x 4"	250	11" x 11" x 8"	57 Lbs.
SI-0031	Fetter Drive, Drive Pt.	⅜" x 4"	400	9" x 9" x 6½"	48 Lbs.
SI-0034	Fetter Drive, Drive Pt.	⅝" x 6"	100	11" x 10" x 8"	60 Lbs.
SI-0036	Fetter Drive, Drive Pt.	½" x 4"	200	11" x 10" x 8"	42 Lbs.
SI-0032	Twist Drive, Drive Pt.	½" x 4½"	200	11" x 10" x 8"	48 Lbs.
SI-0033	Twist Drive, Drive Pt.	½" x 6½"	100	11" x 10" x 8"	33 Lbs.



## LAG SCREW

Bellcore Specification: 6337

Part Number	PID Number
SI-6203	400 262 093
SI-0058	900 241 605

- Constructed of galvanized steel
- Provided with a gimlet point
- Additional sizes available upon request

Part Number	Size	Carton Qty	Carton Size	Carton Weight
SI-6203	¼" x 2"	2000	16" x 8" x 6"	52 Lbs.
SI-6035	⅝" x 1½"	500	12" x 10" x 8"	27 Lbs.
SI-6037	⅝" x 2½"	500	12" x 10" x 8"	24 Lbs.
SI-0039	⅝" x 3"	1100	14" x 10" x 8"	74 Lbs.
SI-0059	⅜" x 1½"	1000	16" x 12" x 8"	70 Lbs.
SI-0058	⅜" x 1¾"	1000	16" x 12" x 8"	75 Lbs.
SI-6237	½" x 2"	250	12" x 10" x 8"	28 Lbs.
SI-6204	¼" x 2½"	2000	10" x 8½" x 5½"	33 Lbs.



## CROSSOVER CLAMP

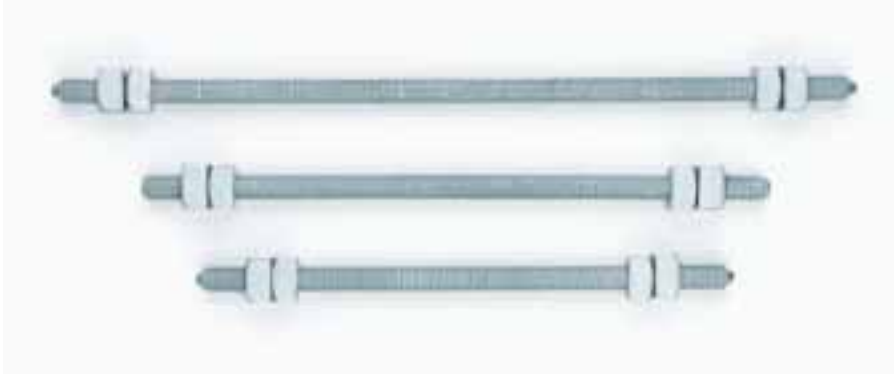
- Used to clamp intersecting ¼" strand runs
- Positive clamping action prevents slippage and abrasion
- Galvanized steel components for maximum corrosion protection

Part Number	Carton Qty	Carton Size	Carton Weight
SI-1756	50	9" x 7" x 6"	34 Lbs.



## DOUBLE ARMING BOLT

Part Number	Bellcore Specification	PID Number
SI-0910	6645	400 013 777
SI-0912	6645	400 013 785
SI-0914	6645	400 013 793
SI-0916	6645	400 013 801
SI-0918	6645	400 013 819
SI-0920	6645	400 013 827
SI-0922	6645	400 013 835
SI-1014	6645B	400 013 868
SI-1016	6645B	400 013 876
SI-1018	6645B	400 013 884
SI-1020	6645B	400 013 892



- Constructed of galvanized steel
- Cone points permit easy driving without damage to threads
- Bolts are supplied with four square nuts assembled
- Additional sizes available upon request

Part Number	Size	Carton Qty	Carton Size	Carton Weight	Part Number	Size	Carton Qty	Carton Size	Carton Weight
SI-0910	5/8" x 10"	50	11" x 11" x 5"	65 Lbs.	SI-0932	5/8" x 32"	25	33" x 7" x 7"	78 Lbs.
SI-0912	5/8" x 12"	40	13" x 11" x 5"	68 Lbs.	SI-1012	3/4" x 12"	25	13" x 9" x 9"	49 Lbs.
SI-0914	5/8" x 14"	30	15" x 7" x 7"	46 Lbs.	SI-1014	3/4" x 14"	25	15" x 9" x 9"	52 Lbs.
SI-0916	5/8" x 16"	25	17" x 7" x 7"	40 Lbs.	SI-1016	3/4" x 16"	20	17" x 9" x 9"	49 Lbs.
SI-0918	5/8" x 18"	25	19" x 7" x 7"	43 Lbs.	SI-1018	3/4" x 18"	20	19" x 9" x 9"	54 Lbs.
SI-0920	5/8" x 20"	25	21" x 7" x 7"	47 Lbs.	SI-1020	3/4" x 20"	20	21" x 9" x 9"	56 Lbs.
SI-0922	5/8" x 22"	25	23" x 7" x 7"	56 Lbs.	SI-1022	3/4" x 22"	20	23" x 9" x 9"	61 Lbs.
SI-0924	5/8" x 24"	25	25" x 7" x 7"	58 Lbs.	SI-1024	3/4" x 24"	20	25" x 9" x 9"	65 Lbs.
SI-0926	5/8" x 26"	25	27" x 7" x 7"	66 Lbs.	SI-1026	3/4" x 26"	20	27" x 9" x 9"	70 Lbs.
SI-0928	5/8" x 28"	25	29" x 7" x 7"	70 Lbs.	SI-1028	3/4" x 28"	20	29" x 9" x 9"	75 Lbs.
SI-0930	5/8" x 30"	25	31" x 7" x 7"	74 Lbs.	SI-1030	3/4" x 30"	20	31" x 9" x 9"	78 Lbs.

## CARRIAGE BOLT

Bellcore Specification: 7096

Part Number	PID Number
SI-0557	400 012 514
SI-0558	400 012 522
SI-0566	400 012 530
SI-0568	400 012 548
SI-0570	400 012 555
SI-0572	400 012 563
SI-0574	400 012 571
SI-0057	400 012 589
SI-0626	400 012 597

- Constructed of galvanized steel
- Square shoulder prevents turning of the bolt when tightening
- Supplied with one square nut assembled
- Additional sizes available upon request



Part Number	Size	Carton Qty	Carton Size	Carton Weight	Part Number	Size	Carton Qty	Carton Size	Carton Weight
SI-0556	3/8" x 3"	100	10" x 9" x 3"	60 Lbs.	SI-0572	3/8" x 12"	150	13" x 9" x 3"	57 Lbs.
SI-0557	3/8" x 4"	100	9" x 9" x 3"	48 Lbs.	SI-0574	3/8" x 14"	100	15" x 9" x 3"	44 Lbs.
SI-0558	3/8" x 4 1/2"	100	16" x 9" x 3"	43 Lbs.	SI-0623	1/2" x 4 1/2"	200	10" x 9" x 4"	64 Lbs.
SI-0560	3/8" x 5"	100	11" x 9" x 3"	45 Lbs.	SI-0057	1/2" x 4 3/4"	150	11" x 9" x 4"	50 Lbs.
SI-0565	3/8" x 5 1/2"	250	12" x 9" x 3"	50 Lbs.	SI-0624	1/2" x 5"	150	11" x 9" x 4"	53 Lbs.
SI-0566	3/8" x 6"	100	13" x 9" x 3"	55 Lbs.	SI-0625	1/2" x 5 1/2"	150	12" x 9" x 4"	57 Lbs.
SI-0567	3/8" x 7"	100	15" x 9" x 3"	60 Lbs.	SI-0626	1/2" x 6"	100	13" x 9" x 4"	40 Lbs.
SI-0568	3/8" x 8"	100	17" x 9" x 3"	25 Lbs.	SI-0627	1/2" x 7"	100	15" x 9" x 4"	45 Lbs.
SI-0570	3/8" x 10"	150	21" x 9" x 3"	48 Lbs.	SI-0628	1/2" x 8"	100	17" x 9" x 4"	50 Lbs.

## MACHINE BOLT

- Constructed of galvanized steel
- Cone points permit easy driving without damage to threads
- Bolts are supplied with one square nut assembled
- Additional sizes available upon request
- Add "-1" to part number to order bolts with 2 square nuts assembled



### Square Head Machine Bolt, 3/8"

Bellcore Specification: 6207

Part Number	PID Number	Part Number	Size	Carton Qty	Carton Size	Carton Weight
SI-1203		SI-1203	3/8" x 1 1/2"	100	6" x 4" x 4"	10 Lbs.
SI-1206	400 013 439	SI-1204	3/8" x 2"	100	6" x 4" x 4"	11 Lbs.
SI-1210	400 013 447	SI-1206	3/8" x 3"	400	11" x 9" x 3"	52 Lbs.
SI-1212	400 013 520	SI-1208	3/8" x 4"	250	9" x 9" x 3"	38 Lbs.
		SI-1209	3/8" x 4 1/2"	250	10" x 9" x 3"	43 Lbs.
		SI-1210	3/8" x 5"	250	11" x 9" x 3"	50 Lbs.
		SI-1211	3/8" x 5 1/2"	250	12" x 9" x 3"	53 Lbs.
		SI-1212	3/8" x 6"	250	13" x 9" x 3"	65 Lbs.
		SI-1214	3/8" x 8"	200	17" x 9" x 3"	58 Lbs.
		SI-1216	3/8" x 10"	150	21" x 9" x 3"	53 Lbs.

### Square Head Machine Bolt, 1/2"

Bellcore Specification: 6207

Part Number	PID Number	Part Number	Size	Carton Qty	Carton Size	Carton Weight
SI-0043		SI-0043	1/2" x 1 1/4"	250	11" x 10" x 4"	40 Lbs.
SI-0043	400 013 462	SI-0044	1/2" x 1 1/2"	200	11" x 10" x 4"	35 Lbs.
SI-0045	400 013 470	SI-0045	1/2" x 1 3/4"	250	11" x 10" x 4"	48 Lbs.
SI-0046	400 013 496	SI-1304	1/2" x 2"	250	11" x 11" x 4"	50 Lbs.
SI-1316	400 013 504	SI-1305	1/2" x 2 1/2"	250	11" x 11" x 4"	60 Lbs.
		SI-1306	1/2" x 3"	200	16" x 8" x 4"	50 Lbs.
		SI-1308	1/2" x 4"	200	21" x 9" x 4"	60 Lbs.
		SI-0046	1/2" x 4 1/2"	150	15" x 9" x 4"	46 Lbs.
		SI-1315	1/2" x 5"	150	16" x 9" x 4"	40 Lbs.
		SI-1316	1/2" x 6"	120	13" x 9" x 4"	45 Lbs.
		SI-1317	1/2" x 7"	100	15" x 9" x 4"	53 Lbs.
		SI-1318	1/2" x 8"	100	17" x 9" x 4"	57 Lbs.
		SI-1319	1/2" x 9"	100	10" x 9" x 4"	62 Lbs.
		SI-1320	1/2" x 10"	100	11" x 9" x 4"	69 Lbs.
		SI-1322	1/2" x 12"	100	13" x 9" x 4"	79 Lbs.
		SI-1324	1/2" x 14"	100	15" x 9" x 4"	85 Lbs.
		SI-1326	1/2" x 16"	100	17" x 9" x 4"	90 Lbs.

## Square Head Machine Bolt, 5/8"

Bellcore Specification: 6207

Part Number	PID Number	Part Number	Size	Carton Qty	Carton Size	Carton Weight
SI-1410		SI-1410	5/8" x 5"	150	11" x 11" x 5"	87 Lbs.
SI-1412	400 013 520	SI-1412	5/8" x 6"	120	13" x 11" x 5"	80 Lbs.
SI-1414	400 013 470	SI-1414	5/8" x 7"	100	15" x 11" x 5"	75 Lbs.
SI-1416	400 013 645	SI-1416	5/8" x 8"	100	17" x 11" x 5"	41 Lbs.
SI-1420	400 013 652	SI-1418	5/8" x 9"	50	10" x 11" x 5"	47 Lbs.
SI-1422	400 013 660	SI-1420	5/8" x 10"	50	11" x 11" x 5"	45 Lbs.
SI-1424	400 013 678	SI-1422	5/8" x 12"	50	13" x 11" x 5"	53 Lbs.
SI-1426	400 013 686	SI-1424	5/8" x 14"	50	15" x 11" x 5"	59 Lbs.
SI-1428	400 013 694	SI-1426	5/8" x 16"	50	17" x 11" x 5"	65 Lbs.
SI-1430	400 013 702	SI-1428	5/8" x 18"	50	19" x 11" x 5"	80 Lbs.
SI-1432	400 013 710	SI-1430	5/8" x 20"	50	21" x 11" x 5"	95 Lbs.
SI-1434	400 314 274	SI-1432	5/8" x 22"	25	23" x 6" x 5"	47 Lbs.
		SI-1434	5/8" x 24"	25	25" x 6" x 5"	53 Lbs.
		SI-1436	5/8" x 26"	25	27" x 6" x 5"	51 Lbs.
		SI-1438	5/8" x 28"	25	29" x 6" x 5"	61 Lbs.

## Square Head Machine Bolt, 3/4"

Bellcore Specification: 6207

Part Number	PID Number	Part Number	Size	Carton Qty	Carton Size	Carton Weight
SI-1508		SI-1508	3/4" x 8"	50	9" x 11" x 6"	60 Lbs.
SI-1510	400 013 728	SI-1510	3/4" x 10"	50	11" x 11" x 6"	73 Lbs.
SI-1512	400 013 736	SI-1512	3/4" x 12"	25	13" x 11" x 6"	40 Lbs.
SI-1514	400 013 744	SI-1514	3/4" x 14"	25	15" x 11" x 6"	45 Lbs.
SI-1516	400 013 751	SI-1516	3/4" x 16"	25	17" x 6" x 6"	50 Lbs.
SI-1518	400 013 769	SI-1518	3/4" x 18"	25	19" x 6" x 6"	60 Lbs.
		SI-1520	3/4" x 20"	25	21" x 6" x 6"	65 Lbs.
		SI-1522	3/4" x 22"	25	23" x 6" x 6"	71 Lbs.
		SI-1524	3/4" x 24"	25	25" x 6" x 6"	75 Lbs.
		SI-1526	3/4" x 26"	25	27" x 6" x 6"	80 Lbs.

## SQUARE NUT

**Bellcore Specification:** 6445

- Used with many products such as machine, carriage or double arming bolts
- Constructed from galvanized steel

Part Number	Size	Carton Qty	Carton Size	Carton Weight
SI-5362	5/16"-18	500	6" x 4" x 4"	8 Lbs.
SI-5363	3/8"-16	500	6" x 4" x 4"	12 Lbs.
SI-5364	1/2"-13	500	7" x 7" x 5"	27 Lbs.
SI-5365	5/8"-11	250	7" x 7" x 5"	26 Lbs.
SI-5366	3/4"-10	250	8" x 6" x 6"	26 Lbs.



## LOCK WASHER

### Spring Lock Washer

- Designed to ensure a tight fit by keeping the bolt and nut assembly in tension
- Constructed from galvanized steel

Part Number	Size Section	For Bolt Diameter	Carton Qty	Carton Size	Carton Weight
SI-900	.141" x .094"	3/8"	5000	10" x 6" x 6"	40 Lbs.
SI-901	.171" x .125"	1/2"	2500	10" x 6" x 6"	40 Lbs.
SI-921	.203" x .156"	5/8"	2500	10" x 6" x 6"	68 Lbs.
SI-903	.234" x .188"	3/4"	1000	10" x 6" x 6"	46 Lbs.



### Double Coil Lock Washer

- Spring temper carbon steel, plated with a special galvanizing process for maximum corrosion protection
- Beveled ends ensure part sits flat in its application

Part Number	Size	Package Qty	Package Weight
SI-911	1/2"	250	12.5 Lbs.
SI-912	5/8"	250	28.0 Lbs.
SI-913	3/4"	250	32.0 Lbs.

#### Deflection vs. Recovery Pressure

Senior Part Number.....	Travel Deflection.....		
Pressure Range	0-750 Lbs.	750-1200 Lbs.	1200-2000 Lbs.
SI-911	0.093"	0.035"	0.002"
SI-912	0.110"	0.057"	0.016"
SI-913	0.014"	0.057"	0.012"



## NAIL

Part Number	PID Number	
SI-3100	400 162 244	• Constructed of galvanized steel for maximum corrosion protection
SI-3101	400 162 251	

Part Number	Size	Carton Qty	Carton Size	Carton Weight
SI-3100	3D x 1 1/4"	25000	10" x 10" x 7"	50 Lbs.
SI-3101	4D x 1 1/2"	14600	10" x 10" x 7"	50 Lbs.
SI-3102	6D x 2"	8400	10" x 10" x 7"	50 Lbs.
SI-3103	8D x 2 1/2"	4550	10" x 10" x 7"	50 Lbs.
SI-3104	10D x 3"	3400	10" x 10" x 7"	50 Lbs.
SI-3113	16D x 3 1/2"	2250	10" x 10" x 7"	50 Lbs.
SI-3105	20D x 4"	1500	10" x 10" x 7"	50 Lbs.
SI-3106	30D x 4 1/2"	1250	10" x 10" x 7"	50 Lbs.
SI-3107	40D x 5"	900	10" x 10" x 7"	50 Lbs.
SI-3108	50D x 5 1/2"	700	10" x 10" x 7"	50 Lbs.
SI-3109	60D x 6"	550	10" x 10" x 7"	50 Lbs.



## WASHER

- Constructed from galvanized steel
- Additional sizes available upon request

### Square Curved Washer

Bellcore Specification: 6150

Part Number	Dimensions				Carton Qty	Carton Size	Carton Weight
	Width	Length	Thickness	Hole			
SI-9000	2¼"	2¼"	⅜"	⅛"	250	9" x 9" x 6½"	57 Lbs.
SI-9004	3"	3"	¼"	⅛"	100	9" x 9" x 6½"	57 Lbs.
SI-9010	3½"	3½"	⅜"	⅞"	50	9" x 9" x 6½"	58 Lbs.



### Round Washer

Bellcore Specification: 6150

Part Number	PID Number
SI-9024	400 285 144
SI-9061	400 285 151
SI-9063	400 285 169

Part Number	Hole Diameter	Outside Diameter	Box Qty	Carton Qty	Carton Size	Carton Weight
SI-9023	⅜"	⅞"	100	100	2" x 2" x 2"	6 Lbs.
SI-9024	¼"	¾"	100	6400	12" x 9" x 5"	40 Lbs.
SI-9061	⅜"	1"	100	5000	14" x 10" x 8"	40 Lbs.
SI-9063	½"	1⅜"	200	200	6" x 4" x 4"	8 Lbs.
SI-9065	¾"	2"	100	100	4" x 4" x 4"	11 Lbs.



### Square Flat Washer

Bellcore Specification: 6150

Part Number	PID Number
SI-9104	400 285 698

Part Number	Dimensions				Carton Qty	Carton Size	Carton Weight
	Width	Length	Thickness	Hole			
SI-9102	2"	2"	⅛"	⅛"	100	6" x 6" x 6"	14 Lbs.
SI-9103	1.89"	1.89"	⅛"	¾"	250	9" x 9" x 6½"	65 Lbs.
SI-9104	2¼"	2¼"	⅜"	⅛"	250	9" x 9" x 6½"	63 Lbs.
SI-9106	3"	3"	⅜"	⅞"	250	9" x 9" x 6½"	67 Lbs.



## STAPLE

### Staple, Ground Wire, Cut Point

- Used to fasten ground wire and ground wire molding to structures
- Constructed from steel and coated as required
- SI-101 and SI-110 are REA accepted

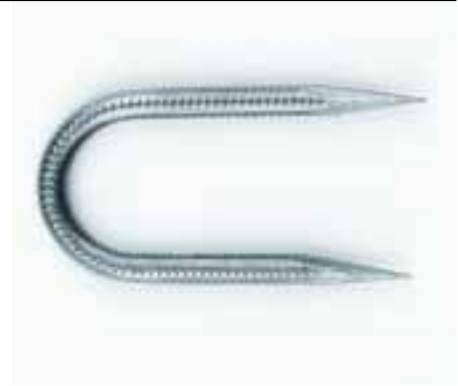
Part Number	Finish	Dimensions Length x Inside Width x Wire Diameter	Standard Package Qty	Approximate Weight Per 100 Staples
SI-100	Copper Coated	1⅜" x ½" x .162"	2500	2 Lbs.
SI-101	Copper Coated	1½" x ⅜" x .162"	2500	2 Lbs.
SI-102	Copper Coated	2" x ¼" x .162"	2500	2 Lbs.
SI-103	Copper Coated	1¼" x ⅜" x .114"	2500	1 Lb.
SI-104	Copper Coated	2" x ½" x .162"	2500	2 Lbs.
SI-110	Hot Dip Galvanized	1½" x ¼" x .148"	2500	2 Lbs.
SI-121	Electro-Zinc	1¼" x ⅜" x .148"	3300	2 Lbs.
SI-122	Electro-Zinc	2" x ½" x .162"	2300	2 Lbs.
SI-123	Electro-Zinc	2¼" x ⅞" x ⅜"	1200	4 Lbs.



## Staple, Ground Wire Molding, Cut Point

- Used to fasten ground wire and ground wire molding to structures
- Constructed from steel and coated as required
- SI-150 and SI-151 are ANSI Standard

Part Number	Finish	.....Dimensions.....		Standard Package Qty	Approximate Weight Per 100 Staples
		Length x Inside Width x Wire Diameter			
SI-150	Hot Dip Galvanized	2" x 1 1/16" x 3/16"		100	4 Lbs.
SI-151	Hot Dip Galvanized	3" x 1 1/16" x 1/4"		100	8 Lbs.
SI-152	Hot Dip Galvanized	3" x 1 1/2" x 1/4"		50	8 Lbs.
SI-153	Hot Dip Galvanized	3 1/2" x 1 3/4" x 1/4"		50	8 Lbs.



## Staple, Ground Wire Molding, Diamond Point

- Used to fasten ground wire and ground wire molding to structures
- Constructed from steel and coated as required
- SI-182 is REA accepted

Part Number	Finish	.....Dimensions.....		Standard Package Qty	Approximate Weight Per 100 Staples
		Length x Inside Width x Wire Diameter			
<b>For 1/2 Inch</b>					
SI-170	Hot Dip Galvanized	2" x 5/8" x .162"		100	2 Lbs.
SI-171	Hot Dip Galvanized	2" x 5/8" x .162"		100	3 Lbs.
SI-172	Hot Dip Galvanized	2" x 5/8" x .187"		100	3 Lbs.
SI-173	Copper Coated	2" x 5/8" x .162"		100	3 Lbs.
<b>For 1 Inch</b>					
SI-180	Hot Dip Galvanized	3" x 1 1/16" x 1/4"		100	8 Lbs.
SI-181	Electro-Zinc	3" x 1 1/16" x 1/4"		100	8 Lbs.
SI-182	Copper Coated	3" x 1 1/16" x 1/4"		100	8 Lbs.



## Staple, Ground Wire, Diamond Point

- Used to fasten ground wire and ground wire molding to structures
- Constructed from steel and coated as required

Part Number	Finish	.....Dimensions.....		Standard Package Qty	Approximate Weight Per 100 Staples
		Length x Inside Width x Wire Diameter			
SI-200	Copper Coated	1" x 1/4" x .114"		500	1 Lb.
SI-201	Copper Coated	1 1/4" x 1/4" x .114"		500	1 Lb.
SI-202	Copper Coated	1 1/2" x 5/16" x .144"		500	1 Lb.
SI-203	Copper Coated	1 3/4" x 3/8" x .144"		500	2 Lbs.
SI-204	Copper Coated	2" x 1/2" x .162"		100	2 Lbs.
SI-205	Copper Coated	3" x 3/4" x 1/4"		100	8 Lbs.
SI-206	Copper Coated	3" x 1 1/2" x 1/4"		100	8 Lbs.
SI-210	Electro-Zinc	1 1/2" x 1/4" x .120"		100	1 Lb.
SI-211	Electro-Zinc	1 1/2" x 3/8" x .148"		100	1 Lb.
SI-212	Electro-Zinc	1 3/4" x 3/8" x .148"		100	2 Lbs.
SI-213	Electro-Zinc	2" x 1/2" x .162"		100	2 Lbs.
SI-214	Electro-Zinc	2 1/4" x 25/32" x 3/16"		100	4 Lbs.
SI-215	Electro-Zinc	2 1/2" x 29/32" x 3/16"		100	4 Lbs.
SI-216	Electro-Zinc	3" x 3/4" x 1/4"		100	7 Lbs.
SI-141	Hot Dip Galvanized	1 1/2" x 3/8" x .148"		100	2 Lbs.
SI-142	Hot Dip Galvanized	1 3/4" x 3/8" x .148"		100	2 Lbs.
SI-143	Hot Dip Galvanized	2" x 1/2" x .162"		100	2 Lbs.



**Senior Industries Datacom Products are engineered and manufactured to provide efficient and reliable installation of wiring and communications networks.** Our rigid quality control standards assure you of the highest quality parts from order to order.

For technical support, installation information and special requirements please contact our Inside Sales Team at: 1-800-350-1650, or via e-mail at: sales@seniorindustries.com

## DISTRIBUTION RING

- Used to provide support for wires in building cable terminals and distribution closets
- Constructed of die cast aluminum



Part Number	Diameter.....				Box Qty	Carton Qty	Carton Size	Carton Weight
	(A)	(B)	(C)	(D)				
SI-4753	4.88"	1.87"	3.13"	2.74"	25	500	16" x 16" x 16"	60 Lbs.
SI-4754	6.12"	3.11"	4.39"	3.74"	25	300	16" x 16" x 14"	48 Lbs.
SI-4755	8.12"	5.12"	6.38"	3.74"	25	200	20" x 30" x 20"	40 Lbs.
SI-4753M	2.44"	.94"	1.57"	2.74"	50	1000	5" x 9¾" x 3"	60 Lbs.
SI-4754M	3.06"	1.56"	2.20"	3.74"	50	600	6½" x 9¾" x 4¼"	48 Lbs.
SI-4755M	4.06"	2.56"	3.19"	3.74"	50	400	8½" x 9¾" x 4¼"	40 Lbs.

## WALL PLATE

- Single hole wall plate
- Durable, heavy-duty plastic, ivory color
- Fits standard electrical outlets
- Other sizes and configurations available on request

Part Number	Carton Qty	Carton Size	Carton Weight
SI-WP-100	50	5" x 3" x 2"	1 Lb.



## BRIDLE RING

Part Number	Bellcore Specification	PID Number
SI-0061	7912	400 260 378
SI-0062	7912	400 260 394
SI-6651	7912	400 260 394
SI-6653	7912	400 260 386
SI-6666	8518	400 497 202
SI-6667	8518	400 497 186

- Used to secure drop wire to wood, masonry or metal surfaces
- Constructed of galvanized steel for corrosion resistance
- A and C bridle rings have wood screw heads
- B, K, M and R bridle rings have machine screw threads



Part Number	Style	Eye Diam.	Thread Size	Package Qty	Carton Qty	Carton Size	Carton Weight
SI-0060	B	5/8"	10/24	25	1000	12" x 12" x 8"	28 Lbs.
SI-0061	C	7/8"	10	25	750	12" x 12" x 8"	30 Lbs.
SI-0062	C	1 1/8"	14	25	300	12" x 12" x 8"	40 Lbs.
SI-0063	C	3"	18	25	100	12" x 12" x 8"	32 Lbs.
SI-6651	A	1 5/8"	16	25	600	12" x 12" x 8"	40 Lbs.
SI-6653	C	1 1/4"	14	25	600	12" x 12" x 8"	35 Lbs.
SI-6666	K	3/4"	10/24	25	1200	12" x 12" x 8"	45 Lbs.
SI-6667	M	1 1/4"	10/24	25	750	12" x 12" x 8"	41 Lbs.
SI-6669	R	1 5/8"	1/4-20	25	525	12" x 12" x 8"	44 Lbs.

## BASEBOARD CLIP

- Used to secure coaxial or twisted pair cable to baseboard
- Steel construction, enamel coated
- Patent pending
- Add suffix to part number to denote color: N = Neutral, W = White, B = Black

Part Number	Cable Size	Carton Qty	Carton Size	Carton Weight
SI-0991	RG 6	1000	6" x 4" x 4"	4 Lbs.
SI-0992	RG 6 Quad	1000	6" x 4" x 4"	4 Lbs.
SI-0993	Telephone	1000	6" x 4" x 4"	4 Lbs.
SI-0994	Category 5	1000	6" x 4" x 4"	4 Lbs.

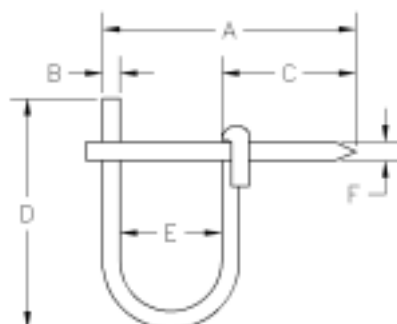


## DRIVE RING

Bellcore Specification: 6835

Part Number	PID Number
SI-6861	400 260 584
SI-6862	400 260 592
SI-6863	401 024 609
SI-6864	400 260 626

- Used for temporary or permanent support of drop wires
- Constructed of galvanized steel for high durability



Part Number	Eye Diameter	Dimensions						Carton Qty	Master Qty	Master Size	Master Weight
		(A)	(B)	(C)	(D)	(E)	(F)				
SI-6861	1/2"	2 1/16"	.125"	1 3/8"	3/4"	1/2"	.120"	50	500	16" x 8" x 6"	9 Lbs.
SI-6862	5/8"	2 1/4"	.135"	1 1/8"	1 1/8"	5/8"	.165"	50	500	16" x 8" x 6"	15 Lbs.
SI-6863	7/8"	2 5/16"	.177"	1 1/2"	2 1/16"	7/8"	.165"	25	250	16" x 8" x 6"	15 Lbs.
SI-6864	1 1/4"	2 15/16"	.192"	1 5/8"	2 3/4"	1 1/4"	.203"	25	250	16" x 8" x 6"	22 Lbs.

**Senior Industries Tools are engineered and manufactured for durability, reliability and for ease of use under the most demanding installation conditions.** Our rigid quality control standards assure you of the highest quality tools from order to order.

For technical support, installation information and special requirements please contact our Inside Sales Team at: 1-800-350-1650, or via e-mail at: sales@seniorindustries.com

**AUGER BIT**

- Used by equipment installers, electricians and other construction trades when boring of holes is necessary
- Strong and rigid for smooth easy cutting
- Single twist construction with single-cutter head and side lip
- No outlining spur
- For use in a hand brace
- Stock sizes: 1/4" through 1 1/16" diameter in 1/16" increments



Part Number	Size	Twist Length	Overall Length	Box Qty	Carton Qty	Carton Size	Carton Weight
SI-AB-250	1/4"	12"	18"	40	160	18 1/2" x 4" x 2 1/2"	32 Lbs
SI-AB-312	5/16"	12"	18"	40	160	18 1/2" x 4 1/2" x 2 1/2"	40 Lbs
SI-AB-375	3/8"	12"	18"	40	160	18 1/2" x 4 1/2" x 2 1/2"	48 Lbs
SI-AB-437	7/16"	12"	18"	40	160	18 1/2" x 5 1/2" x 5"	56 Lbs
SI-AB-500	1/2"	12"	18"	40	160	18 1/2" x 6" x 5"	64 Lbs
SI-AB-562	9/16"	12"	18"	40	160	18 1/2" x 6 1/2" x 5 1/2"	72 Lbs
SI-AB-625	5/8"	12"	18"	40	160	18 1/2" x 7" x 5 1/2"	80 Lbs
SI-AB-687	1 1/16"	12"	18"	40	160	18 1/2" x 7 1/2" x 6"	88 Lbs
SI-AB-750	3/4"	12"	18"	40	160	18 1/2" x 8" x 6"	96 Lbs
SI-AB-812	1 3/16"	12"	18"	40	160	18 1/2" x 8 1/2" x 6 1/2"	104 Lbs
SI-AB-875	7/8"	12"	18"	40	160	18 1/2" x 9" x 6 1/2"	112 Lbs
SI-AB-937	15/16"	12"	18"	40	160	18 1/2" x 9 1/2" x 7"	120 Lbs
SI-AB-1000	1"	12"	18"	40	160	18 1/2" x 10" x 7"	128 Lbs
SI-AB-1062	1 1/16"	12"	18"	40	160	18 1/2" x 10 1/2" x 7 1/2"	136 Lbs

**BELLHANGER'S DRILL BIT**

- Mainly used in telephone, broadband or other applications where wire installations are required
- High quality steel that will withstand rugged use
- A small hole is provided in the flute for pulling wire
- Stock sizes: 3/16" through 3/4" diameter in 1/16" increments



Part Number	Size	Twist Length	Overall Length	Flute Hole	Box Qty	Carton Qty	Carton Size	Carton Weight
SI-BD-187	3/16"	6"	18"	3/32" diameter, 3" from tip	30	120	18 1/2" x 3" x 2 1/2"	31 Lbs.
SI-BD-250	1/4"	6"	18"	3/32" diameter, 3" from tip	30	120	18 1/2" x 3 1/2" x 2 1/2"	41 Lbs.
SI-BD-312	5/16"	6"	18"	3/32" diameter, 3" from tip	30	120	18 1/2" x 4" x 2 1/2"	52 Lbs.
SI-BD-375	3/8"	6"	18"	3/32" diameter, 3" from tip	30	120	18 1/2" x 4 1/2" x 2 1/2"	62 Lbs.
SI-BD-437	7/16"	6"	18"	3/32" diameter, 3" from tip	30	120	18 1/2" x 5" x 5"	72 Lbs.
SI-BD-500	1/2"	6"	18"	3/32" diameter, 3" from tip	30	120	18 1/2" x 5 1/2" x 5"	83 Lbs.
SI-BD-562	9/16"	6"	18"	3/32" diameter, 3" from tip	30	120	18 1/2" x 6" x 5 1/2"	93 Lbs.
SI-BD-625	5/8"	6"	18"	3/32" diameter, 3" from tip	30	120	18 1/2" x 6 1/2" x 5 1/2"	103 Lbs.
SI-BD-687	1 1/16"	6"	18"	3/32" diameter, 3" from tip	30	120	18 1/2" x 7" x 6"	114 Lbs.
SI-BD-750	3/4"	6"	18"	3/32" diameter, 3" from tip	30	120	18 1/2" x 7 1/2" x 6"	124 Lbs.

## TERMINAL WRENCH

- Used to install drop hardware
- $\frac{3}{8}$ " and  $\frac{7}{16}$ " sockets
- 22 AWG wire cutter and stripper built into handle

Part Number	Package Qty	Weight
SI-7195	1	.3 Lbs.



## HANDI-REEL

- Super easy reel installation
- Makes one-man installations easier
- Lightweight aluminum frame
- Locks in open position
- Safety latch prevents spindle from detaching when inverted
- Anti-skid pads
- Designed to support 1 or 2 man carry
- Sturdy enough for outdoor installations
- Patented



Part Number	Type	Max Reel Diameter	Max Reel Width	Spindle Diameter	Carton Qty	Carton Size	Carton Weight
SI-1500	Handi-Reel	19"	13"	$\frac{5}{8}$ "	1	16" x 16" x 10"	4 Lbs.
SI-1550	Handi-Reel	25"	16"	$\frac{5}{8}$ "	1	18" x 20" x 29"	5 Lbs.

## THROWING WEIGHT

PID Number: 401 165 847

- Rubber padded weight that can be easily attached to any type of hand line
- Easy to throw up and over inaccessible locations

Part Number	Carton Qty	Carton Size	Carton Weight
SI-9130	40	9" x 9" x 6 $\frac{1}{2}$ "	41 Lbs.

